

FORWARD
JUNE 1, 2008

This Chronology is presented for the utilization and enjoyment of the members of the Madeline Island Yacht Club. It is the second update of the original material gathered and presented to the membership by Nancy Martin on February 10, 1988.

Acting on the request of the 2007 Madeline Island Yacht Club Board of Directors, I “volunteered” to lead a committee to update the material from 1998 through 2007. After reviewing the project and gaining support from previous update co-conspirator Tom Davison (Board Member), obtaining various data and informational items, from Cile Neumann (MIYC Business Manager), and publishing/printing support from our daughter Wendy and her husband Tim Leier, I came to the conclusion that a committee was not necessary.

This update follows the format utilized ten years ago:

- Over one-half of our current members, eighty, joined the Club since the 1997 update and are probably unaware - (blissfully?) - of many of the events prior to their joining.
- Retention of the data as originally presented by Nancy Martin.
- Presentation of the most recent ten year period, and again;
- Allowance and encouragement for future updates.

In addition to the information tabulated in this Compendium, it must be pointed out that a long Club commitment to the “social/civic” activity side complements the “business” operations. On an annual basis, our Club participates in various town/island civic pursuits, a winter business/social meeting, a summer social party, three races, and accompanying social picnics/parties - all for member enjoyment. These activities combine to make our Club much more than just a place to dock a boat.

As our Yacht Club moves into it’s fourth decade, a certain positive theme runs through the meetings, minutes, notes, and newsletters year after year: This club enjoys the immense benefits of the efforts of many professional and caring people at all levels of the organizational structure. This involvement is reflected in our sound fiscal management, resource preservation, business management and operation, robust social endeavors, and civic participation consistent with successful yacht club operations. It is a theme to follow, in my humble opinion.

AGAIN, THANK YOU FOR THE START, NANCY!! - - - Enjoy!!

Bill Wolfe, MIYC Member

TABLE OF CONTENTS

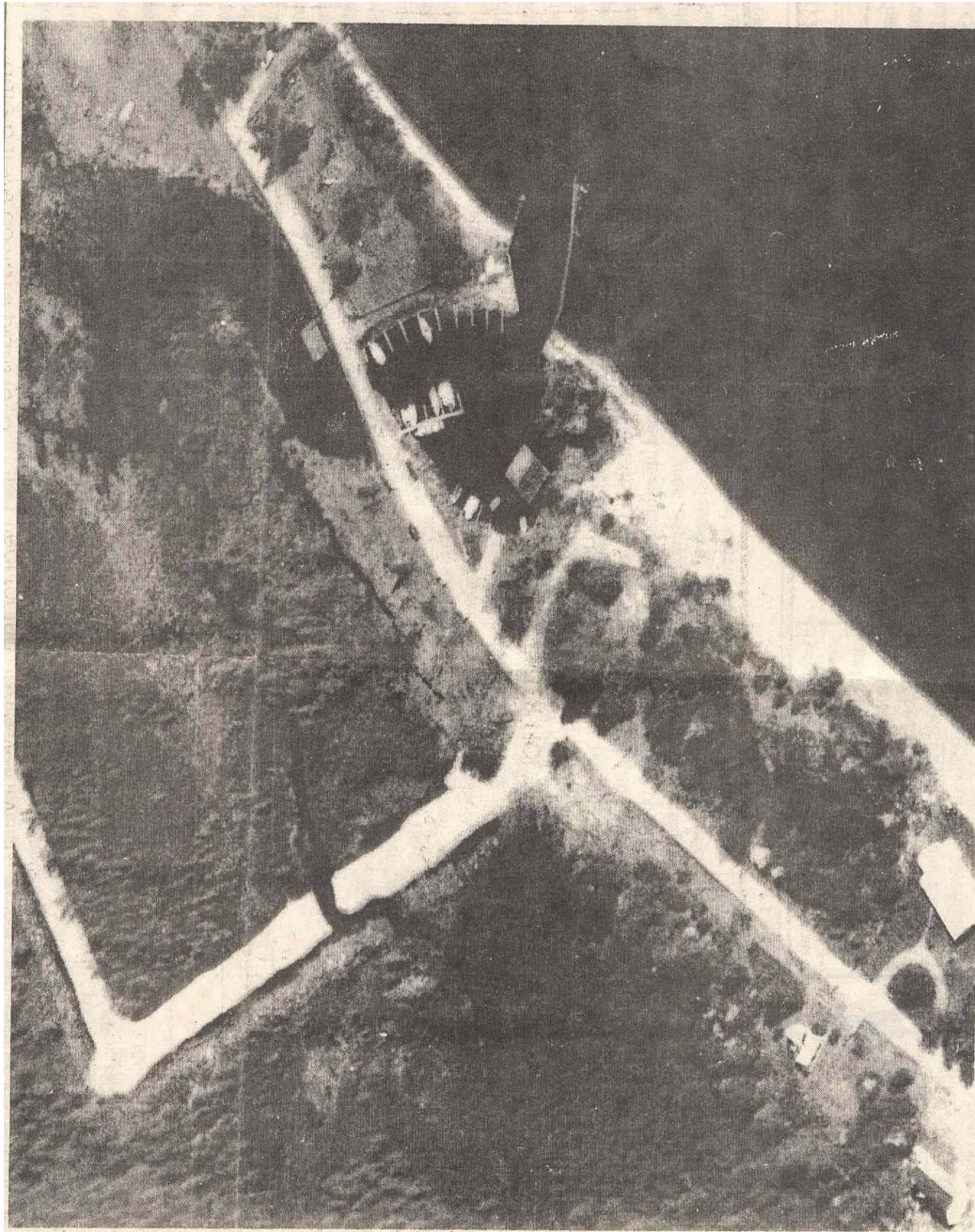
Forward	<i>i</i>
The First Eleven Years, 1977 - 1987	1
The Next Ten Years, 1988 - 1997	15
The Next Ten Years, 1998 - 2007	29
Addendum A, Marina Maps - 1977, 1989, 1997, 2007	37
Addendum B, Board of Directors Roster	43
Addendum C, Employee Roster, December 2007	55
Addendum D, Membership Roster	59

[illegible]

A LETTER FROM THE OLD MARINA

By Frank Gokey

<p>When I first came to Madeline Island in the early fifties - Main Street went straight ahead over a bridge to the road by the Indian Cemetery.</p> <p>Harry Nelson with his customary imagination and energy created a small Marina on the lake side of the bridge by driving wooden sheet piling along the northwest side of the outlet which served as a drain for the area on the land side of the bridge and the area which still exists - on the land side of Main Street.</p> <p>Harry put in a number of docks for small boats. Some of the boats that I remember belonged to Leo Capser - Larry Platt - Bob Finnman. Over the period of its existence - I had a fifteen and one half foot Cape Cod Bullseye - and a twenty three foot</p>	<p>Cape Cod Marlin - both old classic Nathaniel Herschoff designs. The third boat, a Tartan 27, spent part of its career in the old Marina and was one of the original boats in the [new] present Marina.</p> <p>Harry had an old power boat with a big propeller called the "Fair Lady". He would use this from time to time to dredge as needed - by tying it up and starting the engine - to create a channel - or whatever else was necessary.</p> <p>From time to time sandbars would form - and I remember - having to put everyone up in the bow to lift the keel of the Cape Cod Marlin up enough so that we could get over a sandbar to get in and out. After mentioning it to Harry - he used the "Fair Lady" to deepen the channel.</p>	<p>One time when I still had the Bullseye - Larry Platt's son came into the Marina - and - in trying to land - was blown against a power wire that ran over the then existing bridge. Larry's son who was standing on the deck of the Ensign Class sailboat - holding on to a stay - got a huge electrical shock and was thrown into the water and flailed about obviously heavily affected by the electrical shock. We shouted at the other people in the boat to sit down and not touch any of the rigging - as the boat laid with its mast against the live wire - and fished Larry's son out of the water.</p> <p>The next step was to get the boat off the wire without being electrocuted-. Fortunately - in those days - most boathooks had long</p>	<p>wooden shafts. Using my boathook we were able to hook the forestay of the Ensign and drag it away from the wire and allow the other people in the boat to get out safely.</p> <p>Needless to say the offending wire disappeared shortly afterwards.</p> <p>On a lighter note - Bob Finnman's lovely wife Jane would appear in a bathing suit with a bicycle - load the bicycle into the runabout and with a wave and a flashing smile - depart for parts unknown.</p> <p>The new Marina is a spacious, functional, superb place to keep and enjoy our boats - but the old Marina has many pleasant memories and was a welcome haven from a bouncing mooring.</p>
---	--	---	---



THE OLD MARINA - 1966

Shown above is an aerial photo taken of the "Old Marina" in 1966. The present day Golf Course was just under construction at this time. The present day road around the Marina was also just under construction. The present day bridge was not yet put in. Work to build the present day Marina began on December 12th when pilings driven along the road at the old bridge to sheet off the lagoon. The lagoon was then pumped dry and the new Marina was dug out over the winter of 1967.

Reprinted with permission from E. Erickson and the *Madeline Island Gazette*

THE FIRST ELEVEN YEARS

1977 - 1987

Compiled By Nancy Martin

February 10, 1988

THE FOUNDING OF MADALINE ISLAND YACHT CLUB

ARTICLES OF INCORPORATION WERE DULY SIGNED AND ACKNOWLEDGED UNDER OATH, AND WERE RECORDED IN THE OFFICE OF THE SECRETARY OF STATE, ON THE 3RD DAY OF MARCH, 1977, IN ACCORDANCE WITH THE PROVISIONS OF THE MINNESOTA NONPROFIT CORPORATION ACT, MINNESOTA STATUTES, CHAPTER 317.

ROLLIN B. CHILD, HUGH A FITZGERALD AND EDWARD C. STRINGER, CONSTITUTING ALL OF THE INCORPORATORS, DID GIVE NOTICE THAT ON MARCH 3, 1977, AT 10:00 AM, THE FIRST MEETING OF THE BOARD OF DIRECTORS WOULD BE HELD AT 2200 FIRST NATIONAL BANK BLDG., ST. PAUL, TO REVIEW AND APPROVE THE BYLAWS, SELECT OFFICERS AND CONDUCT SUCH OTHER BUSINESS THAT MAY PROPERLY COME BEFORE THE MEETING.

EIGHT DIRECTORS CONSTITUTED THE FIRST BOARD. THEY WERE ROLLIN B. CHILD, (ELECTED 1ST VICE PRES.,) HUGH A FITZGERALD, (ELECTED TREASURER) THOMAS A. HENDRICKSON, ROBERT P. MATHESON, JAMES L. REYNOLDS, (ELECTED PRES.,) DONALD R. SPONGBERG, EDWARD C. STRINGER, (ELECTED SECRETARY) EDWARD H. TITCOMB, (ELECTED 2ND VICE PRES.,) THE BYLAWS WERE AMENDED AT THE END OF 1977 TO READ, COMMODORE, FIRST VICE COMMODORE AND SECOND VICE COMMODORE.

MESSRS. REYNOLDS AND STRINGER WERE AUTHORIZED TO ENTER INTO A CONTRACT FOR THE PURCHASE OF MADALINE ISLAND MARINA FOR THE SUM OF \$350,000. SHORTLY THEREAFTER THIS FIGURE WAS INCREASED TO \$359,000.

AFTER ANALYZING THE COST OF PURCHASING THE MARINA AND EXPENSES THAT WOULD BE INCURRED TO OPERATE THE MARINA IN THE COMING YEAR, A PRICE FOR MEMBERSHIP IN THE CORPORATION WAS AGREED UPON. \$2,500 EACH UNTIL APRIL 1, 1977, AND FROM THAT DATE \$3,500 UNTIL JULY 1ST OF "77". PRIORITY OF SLIPS WAS GIVEN TO BOAT OWNERS LEASING SLIPS IN 1976, AND THEN ON A "FIRST COME FIRST SERVE BASIS." APPROVED FOR MEMBERS WAS \$11.00 PER FOOT FOR SLIP RENTAL AND \$13.00 PER FOOT OF BOAT FOR WINTER HAULING.

THE FIRST NATIONAL BANK OF ST. PAUL, AGREED TO LOAN THE CORPORATION \$200,000 FOR A TERM OF TWO YEARS. THE BANKS SECURITY FOR REPAYMENT INCLUDED A FIRST MORTGAGE ON THE REAL ESTATE, AND THE PERSONAL GUARANTEES OF ROLLIN B. CHILD AND EDWARD R. TITCOMB AND SIX OTHER INDIVIDUALS.

-J-

BY THE APRIL 1ST BOARD MEETING, 80 APPLICATIONS FOR MEMBERSHIP HAD BEEN RECEIVED AND ALL WERE ACCEPTED. THE MEMBERSHIP FEES COMBINED WITH THE AMOUNT AVAILABLE FROM THE BANK BORROWINGS, WAS SUFFICIENT TO PURCHASE THE MARINA FACILITIES AT THE AGREED UPON PRICE AND PROVIDE SUFFICIENT WORKING CAPITAL TO OPERATE THEM.

THE MARINA RULES AND REGULATIONS WERE APPROVED BY THE BOARD ALONG WITH THE SLIP LEASE AGREEMENT FORM AND SLIP LEASE ASSIGNMENTS FOR THE "77" SEASON. BANKING ACCOUNTS WITH THE WASHBURN STATE BANK AND THE NORTHERN STATE BANK OF ASHLAND WERE ESTABLISHED.

THE FOLLOWING STANDING COMMITTEES WERE APPOINTED BY THE PRESIDENT. FINANCE, BUILDING AND GROUNDS, OPERATIONS AND RULES, MEMBERSHIP AND SOCIAL.

MARINA PERSONNEL HIRED FOR THE SUMMER OF 1977.

RODGER CHILD, GENERAL MANAGER	MONICA NELSON, BOOKEEPER
LEROY DAHLIN, SHOP	NICK BROWN, SHOP
BOB TEISBERG, SHOP	DAVE POTTS
CHRIS HADLUND, CHARTERMASTER	"RED" ELDRED

SHOP RATES ESTABLISHED: \$16.50 PER HOUR

ON MAY 28TH, SIXTY VOLUNTEERS SHOWED UP TO CLEAN UP AND REPAIR THE FACILITIES. A CHRISTENING CEREMONY WAS HELD AFTER THE WORK WAS COMPLETED.

A BURGEE DESIGN WAS APPROVED FOR MIYC. A WHITE FIELD, BLUE LETTERS AND FLEUR DE LIS.

THE BOARD AUTHORIZED FUNDS IN THE AMOUNT OF \$29,000 FOR CONSTRUCTING ELEVEN 40-FOOT FINGER PIERS OFF "B" DOCK. FUNDS WERE ALSO AUTHORIZED FOR TILING BOTH THE MEN'S AND WOMEN'S BATHROOMS.

THE FIRST ANNUAL MEETING OF THE MIYC GENERAL MEMBERSHIP WAS HELD DECEMBER 15, 1977, AT THE MINNESOTA CLUB, IN ST. PAUL. THE OFFICERS WHO HAD TAKEN THE CLUB THROUGH 1977, WERE UNANIMOUSLY ELECTED TO SERVE THE COMING YEAR.

THE BOARD HAD APPROVED IRVIN A. GEISSLER, CPA, AS AUDITOR. FROM AN OPERATIONAL STANDPOINT, THE FIRST FISCAL YEAR END (OCTOBER 31, 1977) PRODUCED A BREAK-EVEN RESULT.

THE CLUB ENDED THE YEAR WITH 93 MEMBERS AND OF 114 SLIPS AVAILABLE, 81 WERE RENTED TO MEMBERS AND 20 TO NON MEMBERS, WHICH PRODUCED A REVENUE OF \$45,000. THERE WERE 23 POWERBOATS AND 78 SAILBOATS. AN INCENTIVE OFFERED TO PROSPECTIVE MEMBERS WAS FREE WINTER STORAGE.

1978

IN JANUARY, THE APOSTLE ISLAND YACHT CHARTER ASSOC., TOOK OVER OPERATION OF THE CHARTER PROGRAM FROM THE MIYC. THE MIYC WOULD CONTINUE TO BE THE BASE OF THE OPERATION BUT WOULD HAVE NO RESPONSIBILITY FOR CHARTER OPERATIONS OR BOATS.

MR. RICHARD COLEMAN WAS EMPLOYED AS MARINA MANAGER IN FEBRUARY.

A HYDRAULIC TRAVEL TRAILER WAS ACQUIRED WITH A \$250.00 DOWN PAYMENT AND THE REST OF THE PAYMENTS SPREAD OVER SEVEN YEARS.

IN AUGUST, IT WAS NOTED THAT THE MARINA HAD COMPLETED ITS' FIRST MONTH OF PROFITABLE OPERATIONS. APPROXIMATE OPERATING COSTS PER DAY WERE \$500.00.

THE MARINA SITE WAS NOMINATED FOR HISTORICAL PRESERVATION.

PURCHASE OF MEMBERSHIPS ON AN INSTALLMENT BASIS WAS APPROVED. AT THIS TIME IT AMOUNTED TO \$310.00/MO FOR 12 MONTHS PLUS ASSESSMENTS.

THE FIRST CLUB MANIFEST WAS PUT TOGETHER.

THE 2ND ANNUAL GENERAL MEMBERSHIP MEETING WAS HELD DECEMBER 13, 1978, AT THE DECATHLON CLUB WITH 74 PEOPLE IN ATTENDANCE. AT THIS TIME THERE WERE 97 MEMBERS IN THE CLUB. WITH THE ADDITION OF 21 NEW 40 FOOT SLIPS, THERE WERE NOW 135 SLIPS AVAILABLE. SLIP RENTAL REVENUE FROM MEMBERS, NON MEMBERS AND TRANSCIENTS TOTALED APPROXIMATELY \$61,045.

IT WAS ANNOUNCED THAT A PORTION OF THE MORTGAGE DEBT WOULD BE RETIRED BY UNIFORM ASSESSMENTS AGAINST EACH MEMBER OVER A THREE YEAR PERIOD.

1979

A CREDIT POLICY WAS ADOPTED IN THAT CREDIT WOULD BE EXTENDED TO MEMBERS ONLY AND NON-MEMBERS WERE TO USE CREDIT CARDS.

MONEY HAD TO BE BORROWED FOR NINETY DAYS TO MEET, PAYROLL, TAXES AND WORKMANS COMP.

ACCEPTABLE ELECTRICAL SERVICE WAS NEEDED ON "B" DOCK. HALF THE TOTAL PROJECT WAS TO BE COMPLETED IN TIME FOR THE SUMMER SEASON THE BALANCE OF THE WORK AND EXPENSE DELAYED UNTIL NEXT YEAR. THE ROOF OF THE MARINA WAS ALSO IN NEED OF A GREAT DEAL OF REPAIR.

THE ANNUAL MEETING WAS HELD DECEMBER 4, 1979, AT THE MINNEAPOLIS ATHLETIC CLUB. EDWARD C. STRINGER WAS ELECTED COMMODORE, SUCCEEDING JAMES REYNOLDS, WHO WAS PRESENTED WITH A SHIPS BELL IN GRATEFUL APPRECIATION OF HIS GIANT EFFORTS AND ACCOMPLISHMENTS. 85 PEOPLE WERE IN ATTENDANCE.

1980

IN JANUARY, MR. REYNOLDS MEMBERSHIP SURVEY REVEALED THAT THE MARINA OPERATION IN ALL CATAGORIES WAS VIEWED AT A LOWER LEVEL THAN 1977.

A COMMITTEE OF BOARD MEMBERS WAS APPOINTED AND ASSIGNED THE TASK OF EXPLORING THE FUTURE OPERATIONS OF THE SHOP AND STORE. OPTIONS CONSIDERED WERE IMPROVED PERFORMANCE OR SUCH POSSIBILITIES AS LEASING OR RENTING TO AN OPERATOR, SELLING THE FACILITY, CLOSING DOWN THE SHOP AND STORE OR RENTING SHOP TIME TO MEMBERS AND CONDOMINIUMIZING THE SLIPS.

IN MARCH, ROLLIN B. CHILD WAS ELECTED COMMODORE BY THE BOARD. THOMAS HANSON WAS EMPLOYED AS THE MARINA MANAGER AND THE STAFF WAS REDUCED TO FOUR.

THE CHARTER FLEET OFFICE WAS MOVED TO THE FRONT SOUTHEAST CORNER OF THE BUILDING.

BY JULY, THE FINANCIAL PICTURE WAS BEGINNING TO LOOK MORE FAVORABLE, WITH THE BOOKS SHOWING A \$5,000 PROFIT FOR THE MONTH.

THE REFINANCING PROGRAM WAS COMPLETED WITH A \$120,000 MINNESOTA PROTECTIVE LIFE INSURANCE COMPANY MORTGAGE LOAN.

IN THE SUMMER OF 1980, THE MARINA WAS PLAGUED WITH VARIOUS INCIDENTS OF VANDALISM.

CAPITAL EXPENDITURES THAT WERE APPROVED FOR PAYMENT IN SEPTEMBER AMOUNTED TO \$19,785.00, FOR ROOF REPAIRS, RELOCATING "B" DOCK, PROVIDING THE ELECTRICAL AND WATER SERVICE ON "B" DOCK, AND A SAFETY LINE AGAINST THE RIP WRAP AND LEVELING "D" DOCK.

THE POLICIES OF THE CLUB REGARDING THE REPURCHASE OF MEMBERSHIPS WERE INCORPORATED IN THE BYLAWS IN DECEMBER, 1980.

THE ANNUAL MIYC MEMBERSHIP MEETING WAS HELD AT THE MINNEAPOLIS ATHLETIC CLUB DECEMBER 10, 1980.

BY THE END OF 1980, THERE WERE 117 MEMBER.

1981

EIGHT GUEST SLIPS WERE ADDED TO THE MARINA ALONG THE SOUTH SIDE OF THE LAUNCHING YARD. TWENTY FOUR SLIPS ON "B" DOCK WERE LENGTHENED FROM 25'-35', AND AN IMPROVED LIGHTING SYSTEM WAS INSTALLED ON THE MARINA GROUNDS.

- 5 -

A NEW AND HEAVIER TRAVELIFT WAS ACQUIRED FOR \$85,000, AND DINGY RACKS WERE CONSTRUCTED AT THE END OF "B" AND "C" DOCKS.

THE SHOP LABOR RATES WERE INCREASED TO \$22.00 PER HOUR AND THE BOARD APPROVED A 10% INCREASE IN SUMMER DOCKAGE RATES, THE FIRST INCREASE IN OVER TWO YEARS.

THE FIFTH ANNUAL GENERAL MEMBERSHIP MEETING WAS HELD DECEMBER 9, 1981, ON THE 50TH FLOOR OF THE IDS BUILDING IN MINNEAPOLIS. THE BYLAWS WERE AMENDED TO CHANGE THE FISCAL YEAR FROM AN OCTOBER 31ST CLOSING TO NOVEMBER 30TH.

THE 1981 AUDIT REPORT SHOWED A PROFIT OF APPROXIMATELY \$3,500, AS COMPARED TO A DEFICIT OF \$8,800 IN 1980, AND A \$36,400 DEFICIT FOR 1978 - 1979.

1982

THE BOARD APPROVED A \$1,000 INCREASE IN ITS MEMBERSHIP FEE FROM \$4,200 TO \$5,200, EFFECTIVE JULY 1, 1982. PAYMENTS OF \$500.00 PER MONTH FOR 12 MONTHS WOULD BE ACCEPTABLE.

INTEREST WAS EXPRESSED BY SOME MEMBERS OF THE CLUB IN THE CONSTRUCTION OF AN INSIDE STORAGE BUILDING FOR BOATS. AFTER MANY MONTHS OF RESEARCH AND THE PROPOSALS SET FORTH BEFORE THE BOARD, ALL ACTIVITIES REGARDING AN INSIDE STORAGE FACILITY WERE POSTPONED DUE TO LACK OF RESPONSE FROM POTENTIAL USERS.

MONDAMIN ROAD WAS TAKEN OVER BY THE TOWN OF LAPOINTE AND THE BOARD APPROVED AN EASEMENT OVER MIYC PROPERTY FOR THE TOWN OF LAPOINTE. A 10' STRIP OF LAND WAS LEASED TO THE PUB FOR A SHORT PERIOD OF TIME.

NEW FENCING WAS PUT UP ALONG THE FRONT SIDE OF THE BOAT YARD AND MAJOR LANDSCAPING WAS COMPLETED AROUND THE MARINA BUILDING. SHOP LABOR CHARGES WENT TO \$24.00 AN HOUR.

- 6 -

THE 1983, ANNUAL MEMBERSHIP MEETING WAS HELD FEBRUARY 9TH, AT THE TOP OF THE IDS BUILDING. THE ASSEMBLY REPRESENTED 54 MEMBERSHIPS.

COMMODORE ROLLIN B. CHILD, GAVE A REPORT ON WHAT HAD BEEN ACCOMPLISHED IN THE PAST YEARS AND WHAT STILL NEEDED TO BE DONE. HE THANKED EVERYONE FOR ALL THEIR SUPPORT AND HELP HE HAD RECEIVED AS COMMODORE. HE WAS PRESENTED WITH A ANTIQUE BRASS COMPASS AS A TOKEN OF APPRECIATION FOR ALL OF HIS EFFORTS. HE WAS GIVEN A STANDING OVATION.

JED PETELER WAS ELECTED COMMODORE.

AN ARCHITECTURAL RENDERING WAS SHOWN AND A REPORT GIVEN ON THE EXPANSION OF THE HEAD AND SHOWER FACILITIES. CONSTRUCTION HAD ALREADY STARTED. THE COST OF THE PROJECT WAS ESTIMATED AT \$65,000, AND WOULD BE ASSESSED TO THE MEMBERS AT \$100.00 PER YEAR FOR FOUR YEARS. (1983, 1984, 1985, AND 1986.)

A PLASTIC MIYC MEMBERSHIP CARD WAS APPROVED BY THE BOARD.

THE RECEIPTS FROM THE SALES ROOM FOR JUNE 26TH-JULY 25TH, OF 1983, WERE UP \$5,472.75 OVER THE PREVIOUS YEAR.

AFTER CAREFUL STUDY AND DELIBERATION THE BOARD AGREED TO PURCHASE FOR \$10,000, A 10' WIDE STRIP OF PROPERTY TO THE SOUTH OF THE YACHT CLUB. THE YACHT CLUB WAS CO-OPERATING IN A NEIGHBORHOOD ATTEMPT TO PREVENT 22 CONDO UNITS FROM BEING BUILT ON PILINGS ABOVE THE WARMING POND.

IN OCTOBER OF 1983, A SURVEY OF DOCKAGE RATES IN THE AREA SHOWED THAT MIYC WAS THE LOWEST.

BUBBLERS WERE INSTALLED ON "D" DOCK FINGERS IN AN EFFORT TO PREVENT ICE DAMAGE.

1984

ON JANUARY 17, 1984, THE MIYC ANNUAL MEMBERSHIP MEETING WAS HELD AT THE ALUMNI CLUB OF THE UNIVERSITY OF MINNESOTA. EIGHTY PERSONS ATTENDED.

COMMODORE JED PETELER REPORTED THAT THERE WAS A SIGNIFICANT INCREASE IN WINTER WORK ORDERS, AND THE EIGHT EXTERIOR MARINA DOORS WERE BEING REPLACED. HE EXPRESSED THE THANKS OF ALL TO ED STRINGER FOR HIS YEARS OF GUIDENCE AND COUNSEL. MR. STRINGER RECOUNTED THE HISTORY OF THE CLUB SINCE ITS INCEPTION.

AS A RESULT OF THE MARKETING CAMPAIGN, CHAIRED BY TOM PALESCH, IN WHICH SOME 4,000 MIYC BROCHURES WERE SENT OUT, THE CLUB RECEIVED ABOUT 30 MEMBERSHIP ENQUIRIES.

THE CLUB ENDED THE YEAR WITH A OPERATING PROFIT OF \$10,500.

1985

THE BOARD ACCEPTED THE RESIGNATION OF THE MARINA MANAGER, THOMAS HANSON WITH RELUCTANCE. A SEARCH BEGAN IMMEDIATELY FOR A NEW MANAGER

THE FEBRUARY 6TH, 1985, GENERAL MEMBERSHIP MEETING WAS HELD AT THE TOWN AND COUNTRY CLUB IN ST. PAUL. THE COMMODORE REPORTED THAT THE FINANCIAL OUTLOOK IS BRIGHT AND APPEALED TO THE MEMBERSHIP FOR THEIR BUSINESS IN BOTH THE SHOP AND SHIPS STORE.

MR. AL LEMKER WAS HIRED TO BE THE MARINA MANAGER.

A I.B.M. COMPUTER WAS PURCHASED FOR THE MARINA.

THE \$27,000, OUTSTANDING DEBT ON THE TRAVEL LIFT, WAS PAID OFF IN APRIL, 1985.

THE BOARD VOTED TO INCREASE THE SHOP RATE TO \$26.00 PER HOUR FOR MEMBERS. HAUL OUT WAS INCREASED TO \$16.00 PER FOOT FOR MEMBERS AND \$20.00 PER FOOT FOR NON-MEMBERS.

PERMANENT CHARCOAL GRILLS WERE INSTALLED NEAR THE PARKING LOT.

THE WATER LEVEL WAS VERY HIGH AND BIDS WERE AUTHORIZED BY THE BOARD TO BE TAKEN ON THE INSTALLATION OF A PERMANENT BUBBLER SYSTEM.

AS OF NOVEMBER 1985, TOTAL SALES WERE \$30,000.00, AHEAD OF LAST YEAR.

- 8 -

1986

BOBBY HARTZELL EXPLAINED TO THE BOARD OF DIRECTORS HIS PLANS FOR DEVELOPMENT OF TOWN HOMES, A MEETING HALL AND STORAGE BUILDING JUST NORTH EAST OF THE CLUB. THE BOARD APPROVED AN EASEMENT FOR SEWER LINE CONSTRUCTION ON MIYC PROPERTY JUST NORTH EAST OF THE CREEK.

THE GENERAL MEMBERSHIP MEETING FOR MIYC WAS HELD AT THE RAMADA INN, RIDGEDALE, FEBRUARY 22, 1986.

THE LONG TERM DEBT STOOD AT \$69,000. THE CURRENT MEMBERSHIP COST WAS \$5,500. THERE WERE 149 MEMBERS, 121 OF THESE MEMBERS HAD BOATS AND THERE WERE 21 MEMBERS REQUESTING RETIREMENT.

FRANK B. MARTIN WAS ELECTED COMMODORE.

THE OLD VISITOR SLIPS WERE DECAYED AND UNUSABLE, AND \$15,000 WAS ALLOCATED TO REPLACE THEM.

THE BOARD UNANIMOUSLY VOTED TO KEEP THE YACHT CLUB AND THE CHARTER FLEET SEPARATE AT THE APRIL 16TH BOARD MEETING.

A PARTY WAS HELD TO HONOR PAST COMMODORE JED PETELER, AT THE MADALINE ISLAND PUB ON MAY 26, 1986

IN MAY, THE CLUB REPURCHASED 14 WAITING MEMBERSHIPS AND ADOPTED A POLICY OF RETIRING ONE WAITING MEMBER FOR EACH NEW MEMBERSHIP ACCEPTED.

THE BOARD APPROVED THE PLANS FOR THE SMALL BOAT MARINA, AND GAVE THE MARINA MANAGER THE GO AHEAD WITH DEVELOPING THE AREA AS NEEDED. THE CHARGE RATE WAS SET AT \$150.00 A SEASON FOR MEMBERS, \$60.00 PER MONTH OR \$25.00 PER WEEK. A LAUNCH RAMP FEE WAS ALSO APPROVED FOR \$5.00 IN AND OUT.

APPROVED THE USE OF THE CASH IN THE BANK TO RETIRE THE "HEAD" ASSESSMENT.

COFFEE AND DONUTS WILL BE PROVIDED EVERY SATURDAY MORNING IN THE MARINA FOR CLUB MEMBERS AND GUESTS.

-9-

1987

IN JANUARY, 1987, THE WINTER WORK HOURS WERE 300 LESS THAN LAST YEAR.

THE GAS PUMP RELOCATION PROJECT WAS APPROVED BY THE BOARD AND THE HEAD PUMP OUT WAS SET AT \$5.00, WITH NO SELF SERVICE.

THE MADALINE ISLAND YACHT CLUB GENERAL MEMBERSHIP MEETING WAS HELD ON SATURDAY, FEBRUARY 28, 1987, AT THE DECATHLON CLUB. AFTER THE DINNER AND THE SHORT BUSINESS MEETING, REPRESENTATIVES FROM 3-M DESCRIBED THE USE OF THEIR SPECIAL TAPE THAT WAS USED ON THE HULL OF THE BOAT THAT SUCCESSFULLY RECAPTURED THE AMERICAS CUP IN AUSTRALIA.

THE GAS PUMPS WERE RELOCATED AND THE OLD DOCKS WERE MADE INTO VISITOR SLIPS WITH A THREE HOUR LIMIT.

REQUEST TO TIE BOATS TO THE BREAKWATER WERE DENIED.

THE PRICE OF A MEMBERSHIP WENT UP TO \$6,500, EFFECTIVE JULY 1, 1987.

THE BOARD ALLOCATED \$3,000, TO RETAIN WARZYN ENGINEERING (THE ORIGINAL DESIGNER OF THE DOCKS) TO PREPARE A REPORT ON CURRENT CONDITIONS AND PRIORITIES OF REPAIR. WARZYNS' BID WAS MORE THAN DOUBLE THE AMOUNT THE BOARD ALLOCATED FOR THIS PROJECT AND IT WAS NOT ACCEPTED.

TWELVE PEOPLE HAD SIGNED UP BY AUGUST OF 1987, FOR USE OF THE LAUNCH RAMP AT \$50.00 FOR THE SEASON

NOTICE WAS MADE OF DAMAGE TO MEMBER BOATS AS A RESULT OF PRACTICE BY INEXPERIENCED SAILORS AT ENTERING SLIPS.

THE 1987 BUDGET ANTICIPATED A \$5,000 OPERATING LOSS AND THE DOCKAGE RATES WERE INCREASED FOR THE FIRST TIME IN TWO YEARS BY 9 1/2 PER CENT.

-10-

THE CLUB RETIRED THE MORTGAGE AND FINANCED THIS BY OFFERING DEMAND NOTES TO MEMBERS IN DENOMINATIONS OF \$2,000, WITH INTEREST TO BE APPLIED TO THE MEMBERS ACCOUNTS.

THE MARINA WENT INTO THE SHRINK WRAP BUSINESS FOR WINTER STORAGE OF BOATS.

THE MADELINE ISLAND YACHT CLUB, INC., ADVERTIZED FOR BIDS FOR THEIR INSURANCE REQUIREMENTS.

THE MATERIAL FOR THIS CHRONOLOGY WAS TAKEN FROM THE MINUTES OF THE BOARD MEETINGS AND GENERAL MEMBERSHIP MEETINGS AS WELL AS CERTAIN DOCUMENTS AND LETTERS.

THANKS ARE DUE TO ROLLIN B. CHILD, MONICA NELSON AND FRANK MARTIN, FOR THEIR HELP IN THE RESEARCH.

THE NEXT TEN YEARS

1988 - 1997

Compiled by

Tom Davison and Bill Wolfe

June 1, 1998

FORWARD

This Chronology is presented for the utilization and enjoyment of the members of the Madeline Island Yacht Club. It is viewed as an extension of the original material gathered and presented to the membership by Nancy Martin on February 10, 1988.

Acting on the request of the 1997 Madeline Island Yacht Club Board of Directors, Tom Davison and Bill Wolfe "volunteered" to update the original document for the existing membership. Kathy Davison, Joan Wolfe, and MIYC Business Manager Cile Naumann also provided invaluable support.

As we proceeded into the project it became apparent that this "update effort" would be a bit more than originally envisioned, and it finally materialized in this format due to several considerations, including:

- Realization that almost one-half of our current members, sixty, joined the Club after 1987 and are probably unaware of the original compendium,
- Retention of the data originally presented in an unchanged state,
- Presentation of the most recent ten year period, and
- Allowance and encouragement for future updates.

In this revision, the original document is presented essentially unchanged -- one map moved to an addendum. A bit of "administrative organization" was also incorporated which will accommodate history and, hopefully, many, many, many future updates.

THANK YOU FOR THE START, NANCY!!!!

Enjoy!

Tom Davison and Bill Wolfe

1988

Frank Martin is Commodore.

Received quote to resurface the parking lots of \$37,125 and voted unanimously to go ahead. Obtained bids to insulate the shop.

Our new fast 286 computer system is up and running. Store sales have been exceptional for 2 years in a row.

1989's operating expense budget was set at \$436, 000 and had gross revenues over \$600, 000 for the first time.

1989

Dave Onan is elected Commodore.

Our dock pilings are beginning to fail at the fuel and visitors docks. Pit corrosion is evident. Extensive effort is spent on what is causing the piling to fail.

Small boat marina users were given temporary dockage in the main marina until repairs in the small marina were completed. Marina management asked not to sell fuel to "them jet skiers" by some local folks. Marina Point Condominiums were moved in July.

Special meeting was held at the Dillon O'Brian conference center to vote on bylaws changes which included the Commodore could call special meetings, absentee balloting was allowed, and bylaws could be amended per 11.1.

A \$150 member assessment was approved to cover the balance of re-paving our parking lots. Sales increase to \$596,000 from \$363,900 in 1983.

Newsletter gets a new masthead.

New Rule 14 involving member hired outside contractors is approved in May after years of discussion. It was decided the jet skis would be serviced at our service docks.

Serious garbage recycling begins on Madeline Island. New shopping mall opens on the Island across from S. Corner.

1990

Commodore Abbott is elected.

Twenty members are on the wait list to leave. Bylaws changed to reduce the membership repurchase fee from 20 percent to 10 percent.

Fuel tank storage becomes a problem to insure. Nelson is given contract to replace dock pilings.

Stan Cory is appointed Commodore. Jim Gardner appointed to the board.

Decision to install new main building lock system is made. New locks go on the heads.

Board votes to sponsor the Around Madeline Island Race every year.

Dave Onan initiates a mail box flea market for used boating gear.

After a very long winter the ice is out April 23rd.

New Federal user tax is voted in by congress mandating all boats 16 feet and greater pay a use tax.

1991

Travel lift pilings were replaced and cemetery fence pilings were straightened by Nelson Construction. Our fuel tanks are to be replaced and relined by Minnesota Petroleum this year. LaPointe Volunteer Fire Department installed two standpipes by the bridge so year around water for fire fighting is available.

First Summer Morning Social is to be held Saturday June 22nd at the Clubhouse.

New cradle policy for all boats under 35 feet was passed by the board. Effective April 1, 1991, all boats 26 feet in length and longer must comply with revised United States Coast Guard garbage pollution regulations. Dock rates remain the same as they have been the last four years.

Main building roof and several boats were damaged by very high winds on June 27th at 4:00 am. The winds were said to have peaked at 103 mph.

Shop rates are increased one dollar per hour to \$30 per hour.

First Single handed race around Madeline was organized by Derck Amerman and held in September.

1992

A new members lounge was authorized at the annual meeting.
The fuel tank upgrade project is begun by Minnesota Petroleum.

"C" Dock receives an electrical upgrade so we can meet code and supply more power to the larger boats. A new roof and siding are installed on the clubhouse and shop. Our new shop service door is installed. Additives are added to our gasoline to protect engines designed for leaded gasoline.

The new lounge is completed and is GREAT! Joan Wolfe, Judy Snyder and Mary Kay Carle lead the lounge decorating effort.

The board authorizes a temporary 10 % reduction in member rates to Haul, Launch Storage and the Store.

The sailing world loses Mike Plant.

We join Boat/US cooperating group program.

The new island telephone system is installed and has begun operating.

Club wins first place for "Most Beautiful Float" in LaPoint Fourth of July parade. The multi-unit entry was based upon the theme " Fishing Around ?? – Get Hooked on MIYC".

1993

Annual Meeting held January 30, 1993 at Golden Valley Country Club.
Approximately 65 attendees.

Club in sound financial condition with several projects recently completed or in process, including shop insulation and new service door installation, new "Gagnon

Green" metal roof and siding on main building, landscape work to "A" and "B" dock approaches, various plantings, new metal mast rack, etc.

New picnic tables obtained, total now 5.

Employee medical and life insurance benefits extended, on annual basis, to regular seasonal employees with 1376 hours the previous season at same levels and cost-share as full time employees.

Chequamegon Telephone Company installs telephone access at each slip, at no cost to club. Additional note: Islanders must now dial all seven digits!

June "Social" held utilizing Member lounge. Continental breakfast provided.

Two races sponsored in 1993, Around Madeline Island, and the Single-Handed. Note: 22 boats started the Single Handed, thought to be the second largest one-start race on Lake Superior - - (Largest is the Trans-Superior).

State of Wisconsin advises additional ground water monitoring wells, 6 more months of monitoring same, and certain soil removal required as a part of the on-going fuel tank renovation project.

Membership cost increases to \$7500 effective 12/01/93, with member equity of \$6000 and new member initiation fee of \$1500 being retained by the club as revenue.

Club membership full at 140. "Wait List" for membership varied from 15 to 23 throughout the year.

1994

Annual meeting held February 5, 1994 at Golden Valley Country Club. Approximately 84 attendees.

Club remains in sound financial position with revenues essentially on plan and a \$7000 profit realized in 1993. Plan is to continue to manage the business to a "zero-dollar" profit line.

Project initiated to upgrade the member's lounge, (square off SW corner of building, add paneling, cabinets, carpet, etc.). Cost estimate: \$6800.

City of La Pointe declines to support Fourth of July fireworks display. Membership advised and donation information provided.

Facility upgrades complete or in progress include emergency lighting in bathrooms, exit lighting, emergency door crash bars, office upgrades such as remodeling of sales counter, shelving, counter tops, and propane fired infrared heating conversion in shop.

Board commissions a current property survey citing plat map inconsistencies, road vacations, fuel tank/pump placements, and parking considerations.

Employee Policy Book completed and distributed to all employees, and voluntary physicals offered as part of the compensation benefit package.

Soil and ground water contamination monitoring as a result of the fuel tank renovation project continue. Additional soil removal directed by the State of Wisconsin.

City of La Pointe moves from a burning landfill to a recycle/ship off-island trash operation. Club moves to respond to this fact of life in various ways, including the elimination of trash barrels from dock ends and creation of a recycle collection point located in the Sand lot - (subsequent to a major clean-up of the lot).

Purchased 10 new dock carts with plastic bodies for use next season.

Great social activities by Peg & Mark Gagnon for the year include the Summer "Kick-off", Beer/Brat Party following the Around Madeline Race, and a float entry in the La Pointe Fourth of July parade.

The Board adopted a formal resolution on a Commercial Operator Surcharge affecting commercial operations utilizing club facilities. Rules formulation and implementation to be in 1995 season.

A comprehensive 5 year dock plan, estimated to cost ~\$115,000, involving the renovation of the dock structure, (piling replacement, finger upgrades, pelican pole replacement, etc.), is undertaken utilizing the technical skills and expertise of member Tom Davison. Phase I to commence this winter, working off-ice as much as possible.

Membership remains full, at 140, with "Wait List" running from 18 to 24 through the year.

1995

Annual meeting held February 4, 1995 at Golden Valley Country Club. Approximately 85 attended.

Club in sound financial condition with dock structure upgrade project in process - (worst-case piling on "D" dock collapsed just days before work started)!

Club facility safety upgrades included new metal cabinets for certain hazardous materials, new eyewash station, operational protocol on pump-out operation, and bi-annual employee physical exams - - all resulting from OSHA regulations.

Perceived dock/storage billing inequities resolved by tape measurement of overall length of all boats, furthest aft to most forward point of vessel - - (many members discover they own a longer boat than they realized!).

Club responds to solicitation by La Pointe Fire Department by donating a \$300 grant stipend to improve the department's cold water/ice rescue capabilities with the addition of cold water suits. Civic responsibility and Club dedication to water recreation cited.

Hazardous waste disposal program designed and implemented - (paints, oil, chemical agents, etc.).

Three races sponsored this year, the Madeline Cup - (Around Madeline Race), the Single Hand, and the Double Hand. Social activities included the Spring Social, Fourth of July Parade entry, and a big picnic following the Madeline Cup Race. All activities were very successful, and MIYC captured the Madeline Cup Team Trophy.

Board receives a member/non-member conceptual proposal for obtaining large yacht handling/storage capabilities with no capital investment. Board declined to act pending subsequent definition for consideration.

Split Rock Lighthouse shines on November 10, 1995 commemorating the 20 year Anniversary of the "Fitzgerald" sinking.

All "financed" memberships are paid in full. The roster is full at 140 members, and the "Wait List" for membership ranged from 20 to 30 through the year.

1996

Annual meeting held February 10, 1996 at Golden Valley Country Club. Approximately 70 attendees.

Club remains in sound financial condition with a \$5,000 paper loss noted for the previous year.

Dock structure piling replacement project continues as well as a stepped up dock plank replacement effort and the on-going fuel tank renovation clean-up task. (Noted that the north side of "D" dock collapsed just days before piling work commenced).

Propane reserves at the Marina and on the island ran low just before ice out due to the unusually long and cold winter. Heat conservation measures, (lowering thermostat settings, closing off non-essential areas, etc.) were incorporated, but the ferry finally began to run before the situation became desperate.

The Club conducted an independent energy report which investigated the feasibility of energy conservation efforts for the main building. Conclusion reached that the unit is a poor candidate for upgrade due to inherent design deficiencies in windows, wall insulation, large service door, etc. Decided to add a second furnace to supplement the recently upgraded unit - (largest of it's type available at the time of purchase).

Club again sponsored the Madeline Cup, the Single Hand, and the Double Hand Races. Social events included the first Commodores' Ball held in the evening utilizing the Pub porch with the theme of "Caribbean Nights", a Fourth of July Parade entry, and the Labor Day Brat Picnic following the Madeline Cup race.

Board re-affirmed current Club management philosophy of being a "Club of Members" as opposed to a flat-out "commercial" operation, and initiated various efforts toward increasing employee empowerment, training, managerial skill mentoring, and retention techniques, where appropriate.

Record high water in the fall necessitated the purchase and installation of 30 Tasco de-icer pumps in an effort to minimize the anticipated ice heave effect on the dock

structure over the coming winter. The downside to this being to impact to off-ice work on piling replacement--insufficient ice to support equipment due to the water movement in the marina basin.

The Federal User Tax imposed in 1990 completes a multi-year phase out.

The current membership remains full at 140 members. The "Wait List" for membership ranged around 28-31 during the year.

1997

Annual meeting held February 1, 1997 at the Golden Valley Country Club. Approximately 61 attendees.

Club remains in sound financial condition with the dock structure piling replacement project continuing, essentially on plan.

Received notification from the State of Wisconsin that the remedial efforts required as a result of the fuel tank renovation project are considered sufficient. The ground water monitoring wells were properly abandoned and this lengthy matter is considered behind us.

A summer break-in to the store was noted. Broken windows and approximately \$1200 loss in electronics and clothing experienced.

Three new finger docks ordered for critical replacement. Research on alternate approach continues as costs for these units is getting very high - exceeds \$5000 per 30 foot section.

The extensive Club racing schedule comes of age with the addition of the Commodore's Cup to the Madeline Cup, the Single Hand, and the Double Hand races. Good turn outs for all races and a lot of fun for everyone involved noted.

"C" dock required emergency barge repairs in the spring due to ice-out damage in spite of the bubblers. Thinking is that it would have been much worse for the larger structure without them, due to the record high water levels experienced.

The Club "Partnered" with the Madeline Island Chamber of Commerce to provide no-cost loaner children's life jackets, on short term basis, in conjunction with financial support from the Boat/US Foundation.

A memorial bench for deceased member George Mooney was installed by the Park Service on Stockton Island. Approximately 25 family members and friends attended a plaque placement ceremony in September.

The taxation assessment of the club facilities passed the \$1,000,000 mark. This, combined with other considerations, brought about certain membership changes including: a grandfathering of the existing 12 "Partnership" memberships and accepting no others, and an increase in membership cost to \$10,000, with \$8000 being member equity and \$2000 being initiation fee to be retained by Club as revenue.

A revision to the cost balance of the dock/storage rates and their billing schedule was implemented to more accurately reflect the cost of the service and provide improved cash flow to the Club during the off-season. No changes were made to the total annual cost of slips and storage.

Shop rates increased \$2.00/hour, and non-member slip rental increased \$1/foot.

The membership remains full at 140 members. The "Wait List" for membership decreased from 30 to 22 people subsequent to the membership cost increase.

This was the first winter in history during which the ferry ran all winter!!!

THE NEXT TEN YEARS

1998 - 2007

Compiled by Bill Wolfe

June 1, 2008

1998

New guard rail installed to protect parking lot fuel dispensers.

New dock fingers arrive for replacement of various deteriorated ones in our system. These units are carefully studied and measured with thoughts of Club building future replacements.

Club sponsors three races - Commodores Cup, Madeline Island Cup, and the Single Hand/Double Hand Race.

Club web site initiated and the management team continues to move into the computerized world.

New dinghy ramps installed on the southerly end of the marina basin to facilitate launching of land stored dinghies.

Numerous steps taken to improve signage around the property - water entrance, rules postings, and dock identifiers, etc.

Diesel fuel costs go down ~.40/gallon as the State of Wisconsin no longer requires a road tax on marine diesel.

A significant member survey is formulated, taken, and tabulated. The results received to be incorporated into forward board project planning. Very positive membership inputs to the club operations noted.

Club pledges \$500 to Island committee addressing State of Wisconsin concerns with the single engine wind sled utilized for winter transport of school children. Viewed as a positive civic action.

1999

The year starts with the Pub, (restaurant on adjacent northerly property), being destroyed by fire.

Club membership full at 140 with 23 prospects on the wait list to join.

Board and staff struggle with the complex matter of trying to keep the historic nature of the club aligned with the confined basin area while recognizing the anticipated growth in boat and slip sizes.

A "No - Boat Pool" concept implemented to accommodate those members with no boat for the season on a fair and equitable basis with each other and the whole membership.

Main building head upgrades implemented - new faucets!!

New monitoring system implemented on the fuel storage tanks.

At board suggestion, board member Tom Davison attends three day seminar at the University of Wisconsin on dock maintenance conducted by the original designer of our marina. We seem to be on the right infrastructure upgrade track and ahead of most Great Lakes marinas, probably due to our protected location. We have to place close attention to projects and plans to include fire protection and environmental consciousness in the repair/replace process.

Word reaches Club that the ferry line has purchased a 140 ft. ferry that carries 26 cars. Shortened ferry lines welcome by all!!

2000

Membership remains full at 140 with ~25 on the wait list to join.

A significant dock upgrade/replacement plan presented to the membership at the annual meeting. Various financing concepts were presented including assessments, borrowing, out of cash flow, or some combination of all. Membership advised of a \$450 assessment to get a start on the infrastructure upgrade project.

The Club van reached the point of no return which resulted in a lengthy replacement search. This effort resulted in the purchase of a “new” 1992 vehicle with only 112K miles (showing). All parties involved seem comfortable with the upgrade.

Possible extension of a portion of “D” dock to accommodate larger boats was carefully studied but finally tabled until sometime in the future when re-build of that area occurs.

John Bombkamp is hired as shop manager.

2001

After 5 years of flat dockage fees, a 10% increase is approved, and the labor rate goes to \$38 per hour.

The \$450 membership assessment levied in 2000 is paid off and membership cost is raised from \$10,000 to \$12,000. A wait list fee of \$500 approved.

Steve and Christy Soderling assume race committee responsibilities. Three races are on the schedule: the Commodores Cup, the Madeline Cup, and the Single/Double Race.

The Club learns of impending NPS actions to declare parts of the Apostles a “Wilderness

Area". Total plan is unclear, but perceived concerns with motor restrictions as relating to anchoring within ¼ mile of an island are noted. This process will go along for a long time before the entire scope is understood, finalized, and implemented.

The marina fuel storage tanks are inspected and approved consistent with State of Wisconsin requirements. Next inspection in 5 years.

Significant marina facility improvement noted as board authorized head upgrades to power flush systems. Membership rejoices!!

The wait list to join the Club is at 22 at year end, with the \$500 down requirement.

2002

On January 10 fire destroys Lakeside Condominiums next to the new Inn -- which replaced the old Pub -- which was consumed by fire in 1999. No significant damage to Club or winterized boats noted.

Marina property tax evaluation increased to over \$1million. Although contested, the valuation held. Taxes remained level or down due to reduced mill rate at the time.

The Board initiates a spring board/staff grounds "walk around" to get more eyes on the grounds, determine various improvements, and set implementation priorities.

As a safety improvement, finger ladders are added to the dock system to accommodate self-rescue should anyone fall in the water - (as author did).

Four land access walkways to "D" dock replaced with two safer, more secure units.

Leroy Dahlin assumes role of temporary shop manager.

2003

Extensive property lighting improvements/upgrades involving the main building, gas service dock, parking lots and club grounds are implemented.

Club obtains State of Wisconsin certification and license as pesticide applicators - (deals with various boat maintenance issues such as anti-fouling paint etc.).

Two new "D" dock gangways installed.

The Commodores Cup Race is re-named the Max Cory Memorial Cup Race in remembrance of Maxine Cory, a charter Club member and enthusiastic sailor who passed away in October, 2002 - a friend of all who knew her.

Leroy Dahlin accepts the position of Shop Manager.

Long time member, sailor, and friend Derck Amerman passed away. Active as Club Board member, long distance sailor, race organizer - (Single Hand Race), and past Commodore of the Great Lakes Cruising Club.

Club employee Monica Nelson retires after 27 years of business and finance service.

2004

New phone system installed last December provides voicemail and after hours messaging for the managers as well as callers hearing the near shore marine forecast while on hold.

The ice road is open only three weeks.

In response to a member proposal for the construction of a storage facility on marina property, Board discussions are initiated, a committee formed, and membership advised. Long process anticipated.

The annual September Single/Double Race is renamed the Derck Amerman Cup Race. This brings the active Club sponsored races to the Max Cory Cup, The Madeline Cup - (run as invitational), and the Derck Amerman Cup - (Single/Double).

Energy/efficiency upgrades incorporated into marina facilities included main building access door replacement, new furnace installation, and new shop lighting.

Membership cost increases from \$12,000 to \$15,000.

Steve and Christy Soderling initiate activities associated with creating a Club website.

Second year in a row with both revenue and expenses exceeding \$1 million.

2005

City of La Pointe approaches Club and a plan is initiated which results in the installation of a upgraded culvert system running under the road on the easterly side of the basin from the golf course to our basin.

Work on jetty repair commences with the poorest, southerly, section to be done first. Plan is to spread over a period of time consistent with existing jetty condition.

NPS begins public hearings on their plan to implement a “fee for use” concept for the park.

New website is up and running and a marina wi-fi zone is created through local phone company, Cheqtel.

Storage building feasibility studies continue based on positive comments received from membership solicitation.

A close look at a roof deterioration situation on the main building turns into a rather larger problem. The main building is really three buildings turned into one with a valley that traps water. This water then tends to pool and leak through the metal roof skin and rot the underlying plywood. Extensive investigation prior to repair anticipated.

2006

Club slip rates set at \$48/ ft. and shop rates at \$52/hr.

AIYCA notifies Club that they will no longer utilize the space previously rented in the main building.

The ferry line initiates a “mag” card with a pre-pay system for frequent passengers.

The storage building concept and the main building roof repair analysis continue.

The La Pointe community clinic becomes a reality for the island with basic medical support available on a 3 day/week basis.

The marina infrastructure upgrades undertaken over the past few years combined with known projects ahead such as the building roof, repairs/replacement to the dock system, rip-rap repair, parking lot resurfacing, and other smaller projects combine to point toward a membership assessment, and the membership is advised. (Our jewel is showing it’s age)!

Lake levels are down to the 1925 record low!

2007

The haul/launch well pilings are rebuilt. Very critical to our operations!

Discussion, research, and engineering efforts associated with a storage building enter the third year.

Low water levels require dredging in various parts of the basin and the addition of “deeper” side boards on various slips to accommodate boat movements and docking.

“Uniform” shirts for store personnel and rain gear for shop employees provided.

Main flagpole breaks and falls during a spring storm.

Our long time store manager, Dennis Plet, advises the Board he will retire in May of 2008. Dennis was hired for “sales” in April 1982. After spending too much “sales” time painting boat bottoms and buffing out hulls, our business picked up and he grew with it as our store manager. His knowledge and expertise will be sorely missed. Search efforts for a replacement are initiated.

Projects completed this year include north “D” dock repair, haul/launch well piling repair, shimming of 6 “D” dock pilings, repair of electrical service in sand lot, and other miscellaneous dock maintenance, and dredging. Upcoming projects include roof repair on main building, shoreline repair, “D” dock finger repair, seal coating the parking lot, repair of the “north” jetty, replacement of “B” dock spine, and the replacement of “A” dock.

Membership three year assessment levied to commence at \$1000 per year in two payments per year beginning this fall. Membership cost to increase equal with each payment during the three years concluding at \$18,000.

ADDENDUM A

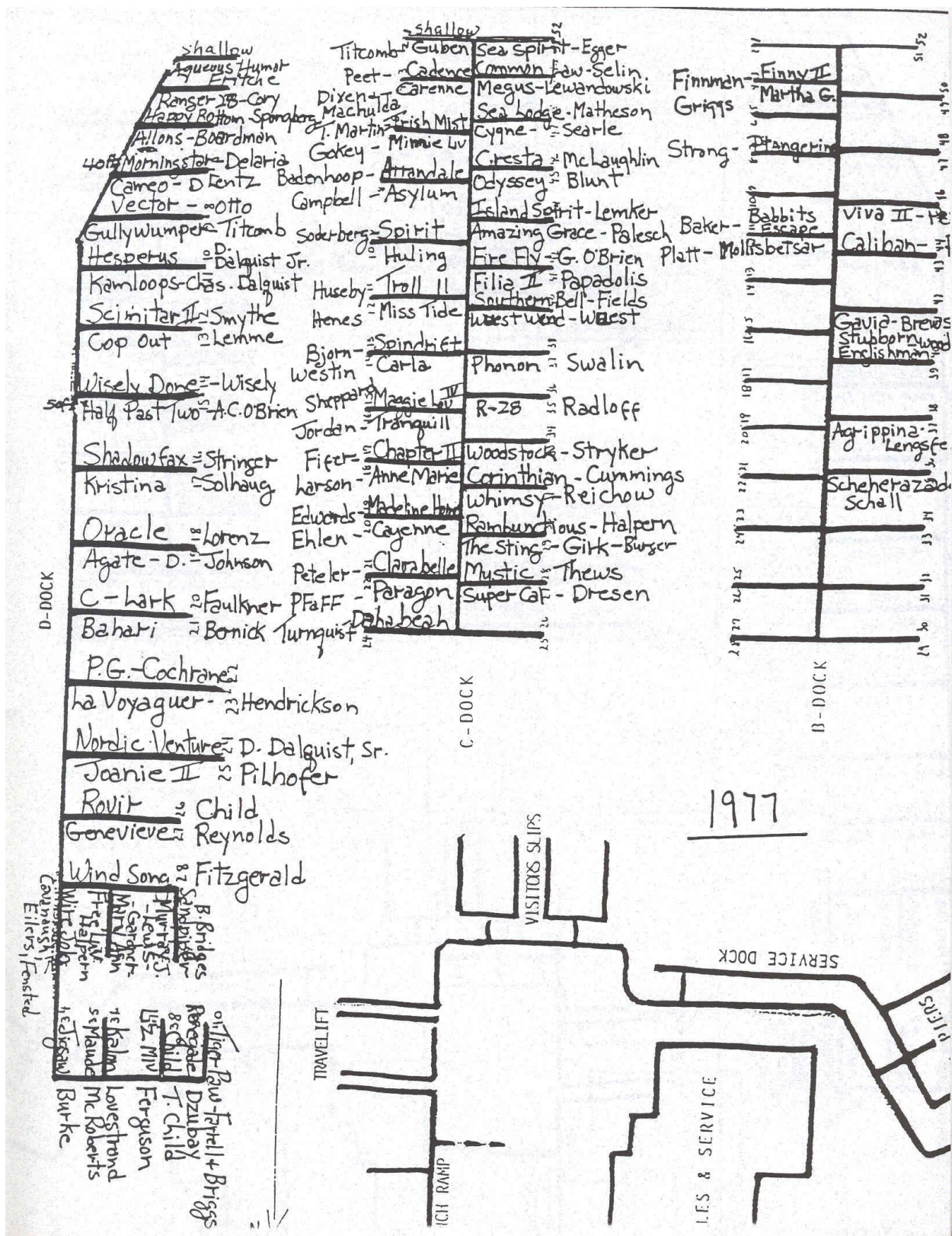
Marina Maps

1977

1989

1997

2007



LISAC 1
 M & M 2
 PENTIMENT 3
 HAPPY BOTTOM 4
 AQUEDUS HUNGER 5
 400 MAD LILY HOME 6
 NANCY K. 7
 SKERRYVORE 8
 RUN A WAY 9
 NORTH WIND 10
 KAMLOOPS 11
 HESPERUS 12
 COP OUT 13
 IRIE VIBES 14
 HALF PAST TWO 15
 SHADOW FAX 16
 JANEMARIE 17
 VICTORY 18
 FREEDOM 19
 C-LARK III 20
 ORACLE 21

THE P.G.
 T'ien

DOPPLER EFFECT

KINGFISHER
 GENEVIEVE

TWIST & SHOUT 28
 PENELOPE 30
 31 MAY/ANN 31
 31 HOUSTON 32
 ARTFUL 33
 30 MOORE 34
 29 EGRESS 35

(FACSIMILE) BLUE PIANO 36
 ALBI 37
 SILMARILB 38
 SHANTI 39
 300 OWLS 40
 RENEGADE 41
 TIGER PIANO 42
 41 GRIGGS

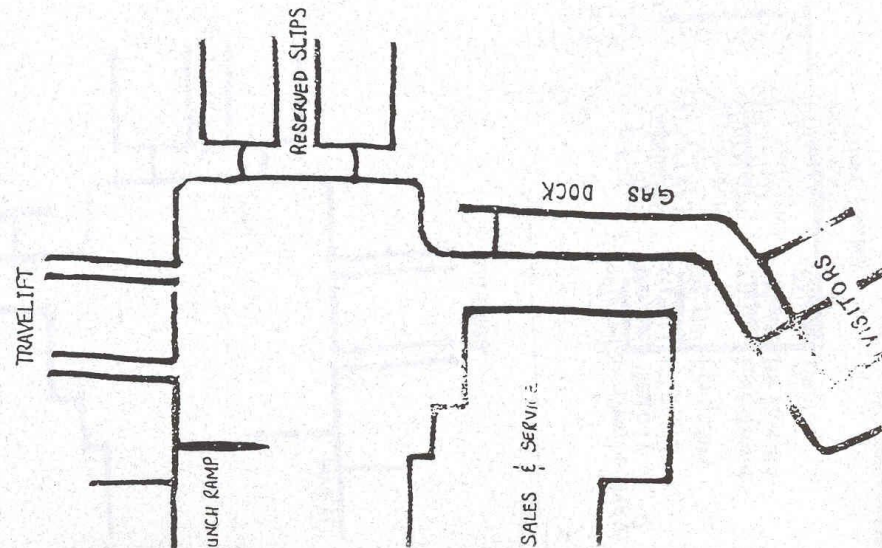
3/15/99

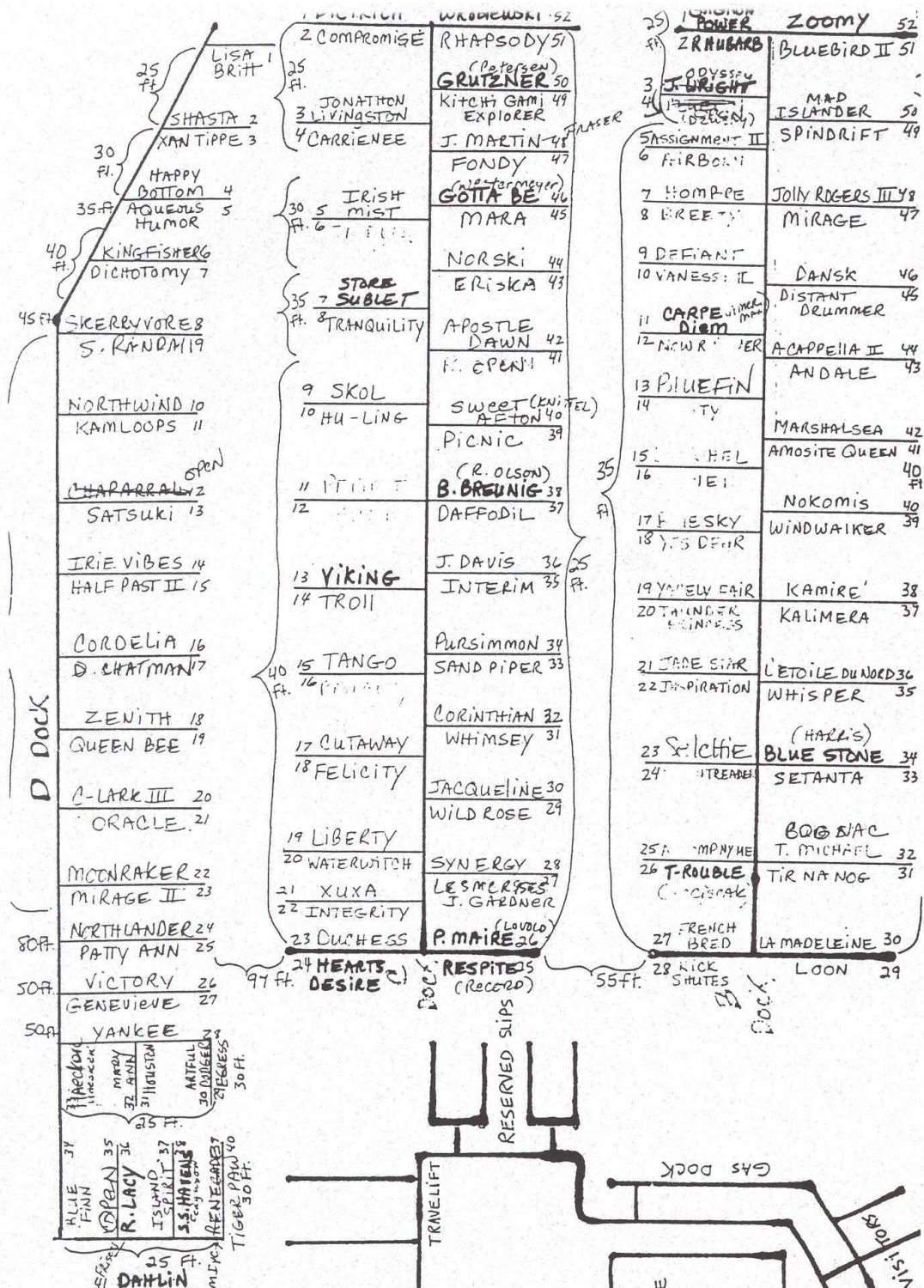
20 COMPROMISE RHAPSODY 51
 JONATHAN S.S. HAYES 52
 21 TARRIENEE BLUE SHADOW 53
 22 IRISH MIST OUMMMM 54
 23 DICOTOMY TIMMYS JOY 55
 24 SERENITA FONDY 56
 25 TRANQUILITY INTERIM 57
 26 HIGH SPARKS ISLAND SPIRIT 58
 27 ITU-LING ANNAPOLIS 59
 28 TROLL GITONEE JAMES 60
 29 MISTY PALADIN 61
 30 ROSARIO PICNIC 62
 31 PENGUIN TRIFLE 63
 32 TANSO RHANNON 64
 33 IZMIR META FOG 65
 34 PENCHANT JACQUILINE 66
 35 ANN MARIE PURS 67
 36 SANDPIPER CYGNE 68
 37 THIN AIR CORINTHIAN 69
 38 IMPETUOUS WHIMSEY 70
 39 SKOL WINTER DREAMS 71
 40 CONTAGIOUS OLIVER 72
 41 NESHOTA SYNERGY 73
 42 KITCHEN GARDEN 74
 43 EXPLORE 75

C-DOCK

21 JOE MS. KITTY 52
 22 DUNAV CLASS OF 53
 23 EGGREY PLAY MAD ISLANDER 54
 24 BLUEFIN SPINDRIFT 55
 25 DREAMWEAVER 56
 26 HOMBRE JOLLY ROGER III 57
 27 WIND WAKER E.V. FIVE 58
 28 TENACIOUS LIBERTY 59
 29 DEFIANT DISTANT DRUMMER 60
 30 STITCH LION LADY MARGARET 61
 31 PRAGMATIC PASSAGES 62
 32 MOOSEY VICTORIA 63
 33 YAN TIPPE GREENBERG 64
 34 HORNET FROYA 65
 35 DAWN TREADS 66
 36 CATS PAW KALEME'RA 67
 37 WINDFALL AIR WAVES 68
 38 THUNDER PRINCESS L'ETOILE DU NORD 69
 39 TIGER RAG WHISPER 70
 40 ALDEBARAN 71
 41 WINDRIDER SETANTA 72
 42 ASYLUM 73
 43 DETENTE WOODS NANCY 74
 44 ODYSSEY TIR NA NOG 75
 45 LORELEI LA MADELEINE 76
 46 CALIENTE NEW HORIZON 77

B-DOCK

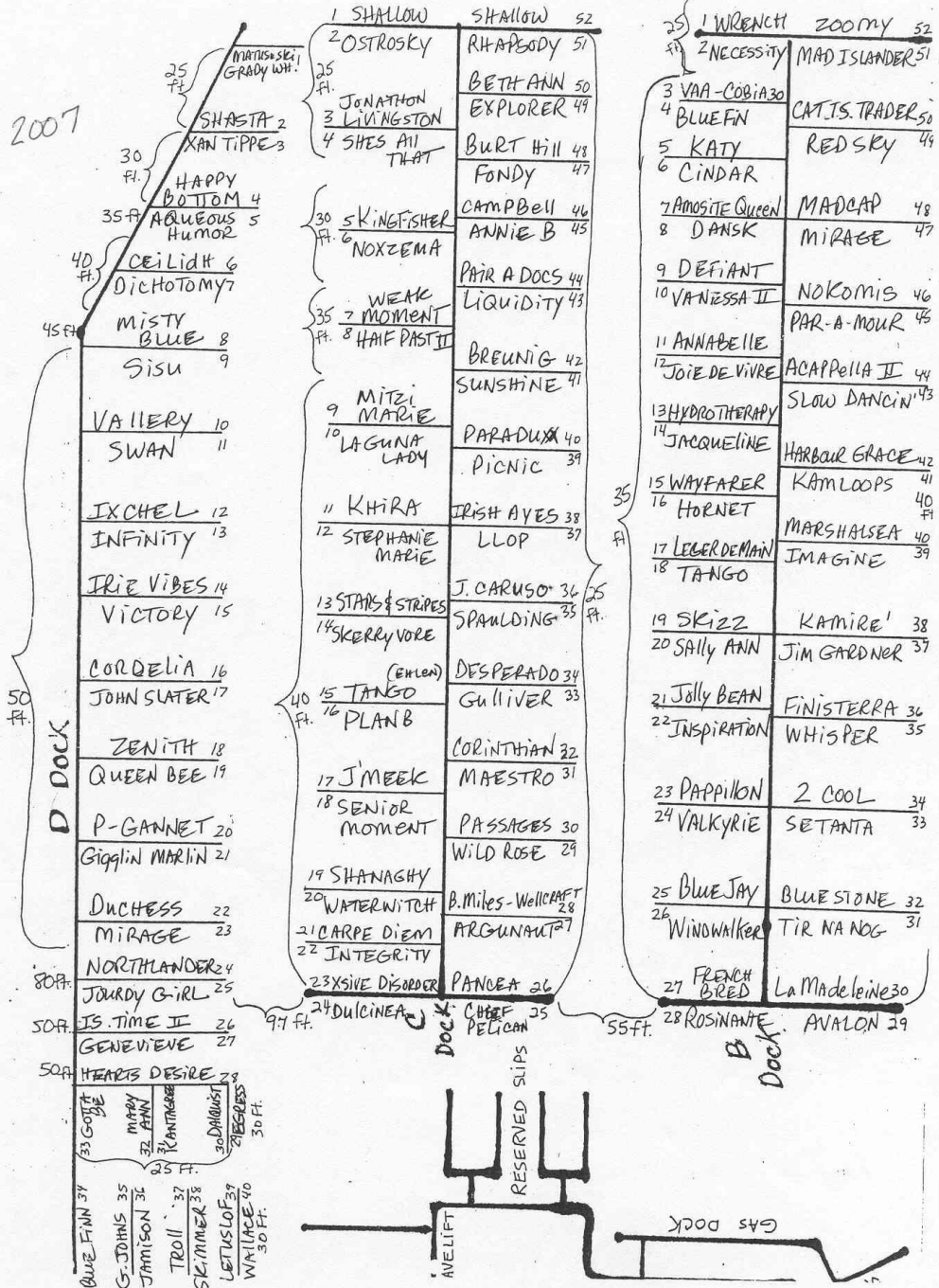




4/7/97
AS OF

As of 6/7/07

2007



ADDENDUM B

Board of Directors Roster, By Year

MIYC Boards of Directors

1977	Commodore 1st VC 2nd VC Secretary Treasurer	James L. Reynolds Rollin Child Edward Titcomb Edward Stringer Hugh Fitzgerald Thomas Hendrickson Donald Spongberg Robert P. Matheson
1978	Commodore 1st VC 2nd VC Secretary Treasurer	James Reynolds Rollin Child Edward Titcomb Edward Stringer Hugh Fitzgerald (resigned 6/78) Stan Blunt Donald Spongberg Tom Hendrickson -assumed Treasurer 6/78
1979	Commodore 1st VC 2nd VC Secretary Treasurer	James Reynolds Rollin Child Edward Titcomb Edward Stringer Thomas Hendrickson Samuel Solhaug Hugh Fitznerald Stan Blunt
1980	Commodore 1st VC 2nd VC Secretary Treasurer	Edward Stringer (resigned 3/31/80) Edward Titcomb Rollin Child (assumed Commodore 4/80) Tom Hendrickson Samuel Solhaug James Reynolds Stan Blunt Hugh Fitzgerald

1981	Commodore 1st VC 2nd VC Secretary Treasurer	Rollin Child Edward Titcomb Tom Hendrickson Frank Martin Samuel Solhaug James Cochrane Jed Peteler Ed Stringer James Reynolds
1982	Commodore 1st VC 2nd VC Secretary Treasurer	Rollin Child Tom Hendrickson Sam Solhaug David Lentz Jed Peteler James Reynolds Ed Stringer James Cochrane Frank Martin
1983	Commodore 1st VC 2nd VC & Treasurer Secretary	Jed Peteler James Cochrane Frank Martin David Lentz Betty Heath Ted Fritsche Ron McLaughlin Ed Stringer James Reynolds
1984	Commodore 1st VC 2nd VC & Treasurer Secretary	Jed Peteler James Cochrane Frank Martin Ron McLaughlin Tom Palesch Betty Heath (resigned 5/84) James Reynolds Ted Fritsche David Lentz Paul McRoberts (filled Heath spot)

1985	Commodore	Jed Peteler
	Secretary	Ron McLaughlin
(other officers undetermined)		Carol Pexa
		Tom Morin
		Paul McRoberts
		Tom Palesch
		Ted Fritsche
		James Cochrane
1986	Commodore	Frank Martin
	1st VC	Tom Palesch
	2nd VC	James Cochrane
	Secretary	Ron McLaughlin
	Treasurer	Tom Morin
		Edward Larson
		Paul McRoberts
		Carol Pexa
1987	Commodore	Jed Peteler
	Secretary	Frank Martin
	Treasurer	Ron McLaughlin
		Tom Palesch
		Chris Soderling
		David Onan
		Ed Larson
		Paul McRoberts
		Carol Pexa (resigned 6/87)
		Jed Peteler
1988	Commodore	Cathy Fraser (filled Pexa spot)
	1st VC	Frank Martin
	2nd VC	Tom Palesch
	Secretary	Dave Onan
		Chris Soderling
		Derck Amerman (finishing Ron McLaughlin last yr. of term)
		Paul McRoberts
		Stan Cory
		Cathy Fraser
		Ed Larson

1989

Commodore
1st VC
2nd VC
Secretary

Dave Onan
Charlie Dalquist
Hugh Madson
Jon Abbott
Stan. Cory
Cathy Fraser
Tom Palesch
Paul McRoberts
Chris Soderling

1990

Commodore
1st VC
2nd VC
Secretary
Treasurer

Jon Abbott (resigned 2/21/90)
Stan Cory- (became Commodore 3/8/90)
Hugh Madson (became 1st VC 3/8/90)
Chris Soderling
Dave Lentz (resigned 3/5/90)
Curt Brekke (became Treasurer 3/5/90)
John Houston
Paul McRoberts
Cathy Fraser
Charlie Dalquist (became 2nd VC 3/8/90)
Jim Gardner (fills vacant position 8/15/90)

1991

Commodore
1st VC
2nd VC
Secretary
Treasurer

Stan Cory
Charlie Dalquist
John Houston
Chris Soderling
Curt Brekke
Allen Barnard
Peg Gagnon
Hugh Madson
Jim Gardner

1992

Commodore
1st VC
2nd VC
Secretary
Treasurer

Stan Cory
Charlie Dalquist
John Houston
Chris Soderling
Curt Brekke
Bill Wolfe
John Cardle
Peg Gagnon
Allen Barnard

1993	Commodore 1st VC 2nd VC Secretary Treasurer	Stan -Cory Charlie Dalquist John Houston Bill Wolfe Curt Brekke Derck Amerman John Cardle Allen Barnard Peg Gagnon
1994	Commodore 1st VC 2nd VC Secretary Treasurer	Curt Brekke Charlie Dalquist Allen Barnard Bill Wolfe John Houston Derck Amerman John Cardle Dan Carle Peg Gagnon
1995	Commodore 1st VC 2nd VC Secretary Treasurer	Curt Brekke Allen Barnard Peg Gagnon Bill Wolfe John Houston Derck Amerman John cardle Dan Carle Tom Davison
1996	Commodore 1st VC 2nd VC Secretary Treasurer	Allen Barnard Peg Gagnon Dan Carle Bill Wolfe Tom Davison Anne England John Cardle Wally Waffensmith Stan Cory

1997

Commodore
1st VC
2nd VC
Secretary
Treasurer

Tom Davison
Dan Carle
Stan Cory
Bill Wolfe
Wally Waffensmith
John Cardle
Tom Casey, Sr.
Anne England
Carl Steinwall

MIYC BOARD OF DIRECTORS 1998 – 2007

1998

Commodore	Dan Carle
1 st VC	Stan Cory
2 nd VC	Tom Casey, Sr.
Secretary	Anne England
Treasurer	Walter Waffensmith
	Carl Steinwall
	Hugh Madson
	Dennis Shafer
	Jean Burton

1999

Commodore	Dan Carle
1 st VC	Stan Cory
2 nd VC	Tom Casey, Sr.
Secretary	Anne England
Treasurer	Walter Waffensmith
	Carl Steinwall
	Hugh Madson
	Tom Davison
	Jean Burton

2000

Commodore	Tom Casey, Sr.
1 st VC	Stan Cory
2 nd VC	Jean Burton
Secretary	Anne England
Treasurer	Walter Waffensmith
	Robert Snyder
	Mark Gagnon
	Rose Brown
	Joe Floyd

2001

Commodore	Tom Casey, Sr.
1 st VC	Stan Cory
2 nd VC	Joe Floyd
Secretary	Rose Brown
Treasurer	Walter Waffensmith
	Anne England
	Mark Gagnon
	Robert Snyder
	Mark Gherty

2002

Commodore	Tom Casey, Sr.
1 st VC	Mark Gagnon
2 nd VC	Mark Gherty
Secretary	Rose Brown
Treasurer	Joe Floyd
	Robert Snyder
	Scott Randall
	Renny Lovold
	Ron Hockin

2003

Commodore	Walter Waffensmith
1 st VC	Stan Cory
2 nd VC	Robert Snyder
Secretary	Mark Gherty
Treasurer	Joe Floyd
	Allen Barnard (appointed 2/03 to replace Gagnon)
	Scott Randall
	Renny Lovold (retired 11/03)
	Tom Davison (appointed to replace Lovold)
	Ron Hockin

2004

Commodore	Walter Waffensmith
1 st VC	Stan Cory
2 nd VC	Robert Snyder
Secretary	Mark Gherty
Treasurer	Joe Floyd
	Scott Randall
	Tom Davison (elected 2/04)
	Ron Hockin
	Allen Barnard

2005

Commodore	Walter Waffensmith
1 st VC	Stan Cory
2 nd VC	Robert Snyder
Secretary	Mark Gherty
Treasurer	Joe Floyd
	Allen Barnard
	Tom Davison
	Ron Hockin
	Phil Myers

2006
Commodore Walter Waffensmith
1st VC Stan Cory
2nd VC Robert Snyder
Secretary Mark Gherty
Treasurer Ron Hockin
Allen Barnard
Tom Davison
Phil Myers
Geoff Burton

2007
Commodore Stan Cory
1st VC Tom Davison
2nd VC Walter Waffensmith
Secretary Allen Barnard
Treasurer Ron Hockin
Geoff Burton
Phil Myers
Peter Gagnon
Robert Kramer

ADDENDUM C

Employee Roster

as of

December, 2007

EMPLOYEE ROSTER

as of

December 2007

		Year Started
Karyl Clark	Retail	2007
Leroy Dahlin*	Shop	1977
Dean Gordon	Maintenance	1997
Beth Griggs	Office	1994
Wade Hanson	Maintenance	2000
Alan Hardie	Shop	2001
Mary Hauser	Retail	1998
Aaron Mager	Shop	2004
Cile Nauman	Office	1989
Chuck Perry	Shop	1986 - 1997; 2002
Dennis Plet	Retail	1982
John Pritte*	Shop	1977
John Traaholt	Shop	1992

*Worked for the marina (prior to MIYC) starting in 1974/75

ADDENDUM D

Membership Roster

as of 11/30/2007

MEMBERSHIP RECONCILIATION 11/30/2007

CERT. NO	LAST NAME	FIRST NAME	JOINED	RETIRED
001	JORDAN	RONALD B	3/31/1977	2/23/1982
002	BAKER	BART/JEAN	3/31/1977	8/20/2003
003	GOKEY	FRANK	3/31/1977	7/1/2006
004	TITCOMB	E.R.	3/31/1977	9/16/1992
005	SOLHAUG	SAMUEL B.	3/31/1977	8/24/1985
006	OTTO	DAVID M.	3/31/1977	1/21/1986
007	BLUNT	STAN/BARB	3/31/1977	3/16/1994
008	DELARIA	DONALD G.	3/31/1977	7/12/1989
009	BADENHOOP	JOHN H.	3/31/1977	5/21/1986
010	HOLMGREN	ROBERT F.	3/31/1977	1/25/1982
011	MATHESON	ROBERT P.	3/31/1977	9/17/1986
012	LEMKER	ALFRED/SALLY	3/31/1977	11/18/1998
013	CHILD	ROLLIN B.	3/31/1977	3/15/1989
014	FAULKNER	BETTY FAYE	3/31/1977	
015	COCHRANE	J.A.	3/31/1977	3/17/1993
016	PETELER	J.C.L.	3/31/1977	4/20/1994
017	WISELY	WILLIAM	3/31/1977	6/17/1987
018	BRIGGS	THOMAS	3/31/1977	11/21/2001
018	BENSON	JOHN BRADY	3/31/1977	11/21/2001
019	PALESCH	TOM/SANDRA	3/31/1977	3/15/1995
020	LENSFELD	GERNOT B.	3/31/1977	6/5/1991
021	MACHULDA	LEROY	3/31/1977	2/10/2007
021	DIXEN	DAVID	3/31/1977	
022	FERGUSON	HELEN	3/31/1977	3/17/2004
022	JAMISON	JOHN PAUL/NELL	3/17/2004	
023	SWALIN	RICHARD	3/31/1977	5/19/1981
024	CORY	STAN	3/31/1977	
025	DALQUIST	DOROTHY	3/31/1977	
026	WESTIN	CARL/MARJORY	3/31/1977	9/16/1992
027	BIORN	NORMAN	3/31/1977	9/17/1986
028	PLATT	LAURA	3/31/1977	4/28/1996
029	EDWARDS	ARTHUR/GAIL	3/31/1977	
030	HUSEBYE	KJELD/KAREN	3/31/1977	
031	PURVIS	MALCOM J.	3/31/1977	5/21/1986
032	CHILD	R. TOM	3/31/1977	7/9/1978
033	CAMPBELL	STUART W.	3/31/1977	
034	FIFER	WILLIAM R.	3/31/1977	4/21/1981
035	STRYKER	JOHN F.	3/31/1977	1/8/1980
036	HENES	P.R.	3/31/1977	11/20/1981
037	FINNMAN	ROBERT/JANE	3/31/1977	3/16/1994
038	FRITSCH	THEODORE	3/31/1977	
039	LEMME	JOHN H.	3/31/1977	8/20/1992
040	DALQUIST III	H. DAVID	3/31/1977	
041	O'BRIEN	A. CRAIG	3/31/1977	11/21/2001
042	BRIDGES	BARRY B.	3/31/1977	6/5/1978
043	HALPERN	DANIEL	3/31/1977	5/21/1986
044	LENTZ	DAVID J.	3/31/1977	9/18/1985
045	LOVESTRAND	JAMES A.	3/31/1977	8/3/1982

MEMBERSHIP RECONCILIATION 11/30/2007

CERT. NO	LAST NAME	FIRST NAME	JOINED	RETIRED
046	DZUBAY	ETHEL M.	3/31/1977	4/21/1999
047	HULINGS	MARY	3/31/1977	5/19/1999
047	KAEMMER	MARTHA H.	5/19/1999	
048	O'BRIEN	GERALD	3/31/1977	5/17/2006
048	O'BRIEN	JOSEPH	5/17/2006	
049	CARPER	IRVING	3/31/1977	
049	SHIDEMAN	FREDERIC	3/31/1977	
049	SEARLE	RONALD	3/31/1977	
050	SELIN	ROGER	3/31/1977	11/23/1982
051	HENDRIKSON	THOMAS	3/31/1977	3/15/1983
052	PFAFF	B. DOUGLAS	3/31/1977	6/21/1989
053	REICHOW	DANIEL W.	3/31/1977	3/21/2001
054	SODERBERG	RICHARD	3/31/1977	9/22/1981
055	PAPADOULIS	CHRISTODOULOS	3/31/1977	5/21/1986
056	DALQUIST	CHARLES/CHRIS	3/31/1977	
057	GARDNER	JAMES H./MARY	3/31/1977	9/19/2007
058	FENSTAD	MARSH	3/31/1977	
058	EILERS	HARRY	3/31/1977	7/24/1992
058	CAVANAUGH	JERRY	3/31/1977	
058	BEVIS	RICHARD	3/31/1977	
059	LEWANDOWSKI	LEON A.	3/31/1977	6/5/1991
060	LARSON	ANN	3/31/1977	2/3/2001
061	WUEST	FRED	3/31/1977	12/16/1996
062	MCLAUGHLIN	RON/KATHY	3/31/1977	5/20/1992
063	STRONG	ADELINE	3/31/1977	10/27/1981
064	BOARDMAN	W.W.	3/31/1977	2/23/1982
065/146	FITZGERALD	HUGH	3/31/1977	4/21/1981
066	FIELDS	WALTER S.DUB	3/31/1977	5/11/1988
067	MARTIN	THOMAS	3/31/1977	8/13/1994
068	BERNICK	RICHARD/LYLAH	3/31/1977	5/21/1986
069	RADLOFF	CHARLES J.	3/31/1977	9/20/1989
070	REYNOLDS	JAMES/JOAN	3/31/1977	8/20/1997
071	SPONGBERG	DONALD	3/31/1977	6/9/1978
072	STRINGER	EDWARD C.	3/31/1977	
073	TITCOMB	EDWARD	3/31/1977	5/19/1993
073	TITCOMB	DANIEL	5/19/1993	6/28/2002
074	LEWIS	RAYMOND	3/31/1977	9/18/1978
075	MCROBERTS	PAUL/DONNA	3/31/1977	
076	SHEPPARD	RICHARD	4/2/1977	8/4/1981
077	GRIGGS	BENJAMIN/MARTHA	3/31/1977	5/21/1986
078	PEET	WILLIAM/BARB	3/31/1977	9/17/1984
079	EHLEN	DAVID M.	7/1/1977	
080	JOHNSON	KEITH	8/5/1977	6/6/1980
081	PERRY	DR.	8/18/1977	6/3/1982
082	TURNQUIST	ELSIE B.	8/24/1977	9/16/1998
083	PILHOFER		8/18/1977	3/19/1981
084	BURKE	MARTIN N.	9/12/1977	6/19/1999
085	BREWSTER	FREDERICK/ALLISON	9/28/1977	5/21/1986

MEMBERSHIP RECONCILIATION 11/30/2007

CERT. NO	LAST NAME	FIRST NAME	JOINED	RETIRED
086	GIRK	DAVID/SUNNY	9/26/1977	3/13/1985
087	EGGER	THEODORE P.	9/30/1977	6/19/1996
088	THEWS	RICHARD	10/6/1977	4/19/1983
089	WOODHAMS	JOHN/LAURA	10/4/1977	5/20/1987
090	CUMMINGS	ROBERT W.	10/21/1977	7/1/1982
091	SCHALL	CHARLES A.	10/17/1977	6/12/1995
092	LORENZ	ALBERT A.	3/1/1977	3/20/2002
092	DALQUIST	JENNIFER	3/20/2002	
093	JOHNSON	RICHARD D.	3/31/1977	5/11/1988
094	BUFFINGTON	WILLIAM J.	3/16/1978	10/17/1990
095	WELLS	FREDERICK B.	4/11/1978	4/15/1987
096	NELSON	NICHEVOFERRY	5/16/1978	4/22/1982
097	ANDERSON	IVERT/JOYCE	5/22/1978	5/21/1996
098	SODERLING	STEVE/CHRISTIE	5/25/1978	
099	HOUSTON	JOHN/CAROL	9/6/1978	
100	FRISCH	ALLAN S.	11/28/1978	1/21/1998
101	ABBOTT	JONATHAN	12/4/1978	9/21/1994
102	AMERMAN	DERCK/SHIRLEY	7/5/1979	7/17/2004
103	VOID			
104	VOID			
105	VOID			
106	VOID			
107	VOID			
108	VOID			
109	VOID			
110	VOID			
111	VOID			
112	VOID			
113	VOID			
114	VOID			
115	VOID			
116	VOID			
117	PETERSON	JAMES	4/1/1979	
118	HEATH	RICHARD H./BETTY	4/1/1979	
119	SCHULTZ	NEIL B.	5/1/1979	6/3/1982
120	SCHMIDT	GREGORY J.	4/1/1979	
120	MILLER	TIMOTHY J.	4/1/1979	
120	SCHMIDT	MICHAEL A.	4/1/1979	
121	OLSON	MITZI	5/1/1979	
122	PRIEBE	GERALD J.	5/1/1979	3/17/1993
123	MCCARTER	THOMAS J.	1/1/1980	4/18/1990
124	RAMSEY	WILLIAM/JANET	10/23/1979	8/20/1986
125	HETZLER	PHYLIS	1/1/1980	9/1/1993
126	MARTIN	FRANK B.	5/1/1980	4/21/2004
126	MARTIN	TOM O.	5/1/1980	4/21/2004
127	FOSTER	THOMAS A./YVONNE	1/1/1980	
128	NOVETZKE	R.C./SALLY	4/1/1980	5/21/1986
129	HENNESSEY	THOMAS W.	1/1/1980	4/20/1994

MEMBERSHIP RECONCILIATION 11/30/2007

CERT. NO	LAST NAME	FIRST NAME	JOINED	RETIRED
130	WOLFRAM	CHARLES/NANCY	7/1/1980	8/16/1983
131	HOOPER	ROBERT A.	1/1/1980	8/16/2000
132	RASMUSSEN	K.DALE	8/11/1980	5/21/1986
133	EKBERG	DAVID J.	1/1/1980	5/21/1993
134	MCCAFFERTY	CHARLES	6/6/1980	
135	BINSFIELD	JIM	1/1/1980	3/16/2005
136	VOID-SEE69		4/1/1977	
137	SEEGERS	ARNOLD/LOLA	12/2/1980	5/21/1986
138	PEXA	CHARLES E.	2/17/1981	7/13/1988
139	MURRAY	JAMES/MARY	2/17/1981	5/29/1984
140	MCGUIRE	TERRY	2/17/1981	5/11/1988
141	SWANSON	A. JR.	4/1/1981	2/21/1984
142	LARSON	ANN/ED	1/1/1981	3/18/1998
143	LAUER	RONALD D.	1/1/1981	
144	EVENSON	ROBERT V.	1/1/1981	5/24/1996
145	VANDYKE	RUSSELL/SALLY	4/4/1981	6/18/1986
146	DAVIDSON	ROBERT L.	1/1/1981	5/21/1996
146	JOHNSON	DAVID R.	1/1/1981	9/1/1992
147	DRESEN	JAMES D./MARY	1/1/1981	
147	WOODS	THOMAS CHIP	1/1/1981	
148	MINDER	WILLIAM/JEANNE	1/1/1981	10/23/1985
149	GERSTENBERGER	KARL	1/1/1981	6/3/1982
150	BUTLER	WILLIAM C.	1/1/1981	11/10/1993
151	BETHKE	JUDY	1/1/1981	5/21/1986
152	TUCKER	ROBERT B.	8/9/1981	11/15/2000
153	SHAPIRO	MURRAY	8/4/1981	3/13/1985
154	GRAYDEN	EDWARD N.	1/1/1981	6/5/1991
155	HARTZELL	ROBERT/SUSAN	1/1/1981	
155	NELSON	LAURY	1/1/1981	
156	TARHAN	SAIT	10/28/1981	3/20/1996
157	OLSON	ROD	10/27/1981	8/15/2007
157	MARKOE	DAVID	10/27/1981	
158	BRINGS	GERALD R.	1/1/1982	5/20/1992
159	VOID			
160	BRUDVIG	TED/PAMELA	1/1/1982	8/22/1984
161	DEJONG	HENDRICK/CHERI	1/1/1982	8/20/1986
162	ANDERSON	RICHARD L.	1/1/1982	11/18/1992
163	ENGLAND II	THOMAS/ANNE	1/1/1982	5/16/2007
164	OLSON	JAMES E.	2/24/1982	5/21/1986
165	EBNER	JOHN F.	1/1/1982	8/21/1991
166	BOWEN	JEFF/BRENDA	1/1/1982	
167	O'DONNELL	JOHN/MARGARET	4/4/1982	7/10/1992
168	THOM	DAVID	5/19/1982	
169	SPORTELLI	PAUL	5/19/1982	3/20/1991
170	PRIEST	JOHN	9/19/1982	5/21/1986
171	YOUNG	J.RAYMOND	5/19/1982	8/20/1986
172	CARDLE	JOHN	1/1/1982	9/19/2001
173	BOXALL	DAVID	1/1/1982	

MEMBERSHIP RECONCILIATION 11/30/2007

CERT. NO	LAST NAME	FIRST NAME	JOINED	RETIRED
174	CHIESL	WILLIAM	1/1/1982	10/21/1992
175	DELLER	HANS P.	1/1/1982	
175	RAMALEY	WILLIAM	5/15/1991	3/20/2002
175	MUYRES	MARV		3/20/2002
176	MESSICK	JOSEPH JR.	3/20/1984	5/21/1986
177	SCHAUB	ROBERT D.	8/1/1982	12/15/2004
178	BIORN	NORMAN E.	1/1/1981	4/19/1989
179	VOID-SEE154	GRAYDEN	9/2/1981	5/10/1989
180	DIVERTIE	CAROL	1/1/1982	
181	DUPLICATE	SEE176	1/1/1982	5/10/1989
182	FISCHLOWITZ	ALAN	3/15/1983	7/26/1993
183	WITTKOPP	DANIEL L.	3/16/1983	9/16/1992
184	VOID SEE101		1/1/1982	1/1/1982
185	VOID SEE101		1/1/1982	5/10/1989
186	RICE	MARY H.	4/19/1983	
187	MOONEY	GEORGE/PAT	4/19/1983	6/19/1996
188	WILSON	THOMAS M	6/16/1983	8/20/2003
188	KAPSNER	ADRIAN	6/16/1983	8/20/2003
189	VOID			5/10/1989
190	ELLING	ROGER A.	8/1/1983	4/17/1991
191	SNYDER	ROBERT K./JUDY	12/14/1983	
192	WAIDE	R.E.	2/14/1984	3/16/1994
193	WOLFE	WILLIAM/JOAN	5/29/1984	
194	JONES	NANCY/WILLIAM	1/1/1984	4/15/1987
195	GAGNON	MARK	1/1/1984	
196	ONAN,II	DAVID/JANE	9/19/1984	3/16/1994
197	DORLE	DAVID/DAYNA	1/1/1984	7/12/1989
198	RECORD	LARRY/GINNY	1/24/1985	5/19/1999
199	FRIED	DONALD J.	1/24/1985	10/16/1991
200	CULTER	JOHN D.	3/13/1985	9/15/1993
201	ECKMAN	PHILIP L.	3/13/1985	3/20/1996
202	NORAN	STEVEN/ANNA	5/1/1985	8/19/1987
203	DOWS	SUTHERLAND	8/21/1985	6/21/1989
204	WOODS	DONNA	8/21/1985	
205	GRAEBNER	ALAN/MARGARET	8/21/1985	
206	FRASER	ANDREW	9/18/1985	9/22/1999
207	MADSON	HUGH/MARILYN	9/18/1985	
208	HAWKINS/KILL	JIM/ELINOR	1/28/1986	3/11/1992
209	BROWN	ROSE	4/16/1986	4/16/2003
210	ROGERS	JIM/BARB	5/21/1986	7/16/1999
211	GNITECKI	JAMES	5/21/1986	6/17/1987
212	DONALDSON	RUTH	5/21/1986	2/19/2003
213	PETERSEN	FRANK WOODS	5/21/1986	
214	KRUEGER	KENNETH R.	6/18/1986	3/23/1988
215	STRAND	RICHARD C.	6/18/1986	
216	BREKKE	CURTIS M./PATRICIA	8/20/1986	
217	RUPPLE	JIM/SHIRLEY	8/20/1986	
218	DALQUIST JR.	MARK	8/20/1986	6/12/1994

MEMBERSHIP RECONCILIATION 11/30/2007

CERT. NO	LAST NAME	FIRST NAME	JOINED	RETIRED
219	KARP	EDWARD C.	9/17/1986	4/18/1990
220	LARSON	ANN/ED	9/17/1986	6/5/1991
221	VIZANKO	STEVEN J.	4/16/1987	9/19/1990
222	PERRY	JACQUELINE	4/16/1987	8/16/2006
223	PARSINEN	JOHN D.JACQUELYN	5/20/1987	
224	JESSEN	RICHARD T.	6/3/1987	3/20/1996
224	JESSEN	MICHAEL R.	6/3/1987	3/20/1996
225	PETTY	ROBIN/MONIQUE	6/17/1987	
226	CRONIN	PATRICK	6/24/1987	
227	LINEHAN	GENE	5/11/1988	3/17/1993
228	BJERK	GORDON M.	5/11/1988	11/10/1993
229	HARRIS	LAWRENCE R.ANNIE	5/11/1988	
230	HAINES	RICHARD L.	7/13/1988	9/18/1996
231	LENTZ	DAVID	3/15/1989	7/30/1997
232	CHAMBERS	ROLAND/MARY	4/19/1981	10/21/1992
233	WAFFENSMITH	WALTER L./CONNIE	6/21/1989	
234	KRUSKOPF	DAVID J./KATHRYN	6/21/1989	
235	GRIGGS,JR.	BENJAMIN G.	7/12/1989	9/19/1996
236	DORLE	DAVID W.	7/12/1989	5/15/1991
237	BARNARD	ALLEN D./ANDRA	9/20/1989	
238	VOID	BISHOP,CARTER		
239	LLOP	HENRY C.	4/18/1990	
240	PAYNE	W. SPENCER/MAUREN	4/18/1990	5/20/1998
241	ERIKSTRUP	CARL/GRACE	9/19/1990	
242	STEINWALL	CARL/SHARON	10/17/1990	10/17/2001
243	CHATMAN	DONALD	3/20/1991	9/20/2000
244	DALY	JOSEPH L./CATHY	3/20/1991	
244	BAKKEN	LARRY	3/20/1991	3/17/2004
245	KROMROY	TOM/KATHRYN	3/20/1991	
246	PUTNAM	JOHN/RUTH	4/17/1991	3/15/1995
247	APPLETON	FRED R.	4/17/1991	5/17/1995
248	LIDA	DOUGLAS C.	4/17/1991	3/16/1994
249	COLE	JOHN/SALLY	4/30/1991	12/15/2004
250	HENRY	VINCENT/MARCIA	5/22/1991	10/15/2003
251	CUNNINGHAM	BRUCE	5/25/1991	
252	GERRY	ELBRIDGE/BARB	8/21/1991	9/19/2001
253	CARLE	DAN/MARYKAY	9/18/1991	
254	LOVOLD	RENNY/LINDA	9/18/1991	
255	SEGLER	ERIC/ANGELA	10/16/1991	9/19/2001
256	DAVISON	TOM/KATHY	1/29/1992	
257	HOCKER	G.BENJAMIN	3/11/1992	1/11/2005
258	SMOOT	CHARLES/LUCY	3/11/1992	
259	FOUST	CHARLES/DONNA	4/15/1992	3/15/2006
260	OLSEN	NEIL/CAROL	5/20/1992	
261	BOWERS	JAMES/KATHLEEN	5/20/1992	
262	GHERTY	MARK/MAETA	5/20/1992	
263	MAY	JAMES/EVA	5/20/1992	
264	HARMON	HENRY/ELSA	5/20/1992	

MEMBERSHIP RECONCILIATION 11/30/2007

CERT. NO	LAST NAME	FIRST NAME	JOINED	RETIRED
265	HATCH	JAMES/CATHIE	6/17/1992	
266	LESMERISES	FELIX/LINDA	9/16/1992	8/19/1998
267	SACKETT	TOM/LYNN	10/21/1992	
268	CUCCI	GERALD R.	3/17/1993	
269	CASEY,SR	TOM/SHARI	3/17/1993	
270	AALID,JR.	SIG	9/15/1993	4/16/2003
271	GREGERSON	JOHN/PATRICIA	11/17/1993	10/21/1998
272	HAECKER	GEORGE/JUDITH	3/16/1994	
273	KNITTEL	WALTER/MONIKA	3/16/1994	3/21/2001
274	BUZICKY	KEVIN/BETH	3/16/1994	
275	DAVIS	JOE/MARY	3/16/1994	
276	FLOYD	JOE/ELAINE	3/16/1994	
277	BURTON	GEOFFREY/JEAN	4/20/1994	
278	ROCK	PETER	4/20/1994	
279	RANDALL	SCOTT/JANE	6/12/1994	
280	JOHNSON	MARK	8/13/1994	9/20/2000
281	ALTON,JR	H.ROBERT	9/21/1994	
282	SHAHER	DENNIS/PAT	3/15/1995	5/19/1999
283	KOCISCAK	ANDREW P.	3/15/1995	
284	WESTERMEYER	JOSEPH/RACHEL	5/17/1995	
285	LOVOLD	RENNY/LINDA/RENEE/ERIK	5/1/1995	
286	MICHAEL	EDWARD A.	3/20/1996	10/15/2003
287	SHUTES	RICHARD/ELIZ	3/20/1996	
288	BRUCE	ROBERT	3/20/1996	
289	MARTIN	FRANK/NANCY	4/17/1996	
290	WILTZ	JIM/JANE	5/24/1996	
291	SWEEN	MAURICE	6/19/1996	3/18/1998
292	RICHTER	ROBERT/TERESA	6/19/1996	
293	FALCONER	DAVID/SHOSHANA	9/18/1996	
294	HALLBERG	DENNIS/ARLENE	11/25/1996	
295	VAA	BOB/JUDY	12/16/1996	
296	FOGARTY	TIM/CATHERINE	5/21/1997	
297	TUTTLE	DAVID/BARB	5/21/1997	4/17/2002
298	MAIRE	PAUL/KRISTEN	7/30/1997	
299	BRUST	TOM/SUSAN	8/20/1997	
300	STOUT	WILLIAM/CARMEN	1/21/1998	
301	STAHEL	ALWIN(BUD)	3/18/1998	
302	WATERHOUSE	RON	3/18/1998	10/20/2004
303	LACY	RONALD L.	5/20/1998	
304	DONALDSON	KEITH/LINDA	8/19/1998	
305	ASHENFELTER	TIM/JOANNE	9/16/1998	
306	BREUNIG	BOB/KARI	10/21/1998	
307	GRUTZNER	FRITZ/ERIC	11/18/1998	
308	LYONS	THOMAS	4/21/1999	10/19/2005
309	DURFEY	ROBERT	5/19/1999	
310	HOCKIN	RONALD	5/19/1999	
311	RUSSELL	GARY/ROBIN	6/19/1999	
312	JOHNSON/JONES	LARRY/VAL	7/19/1999	

MEMBERSHIP RECONCILIATION 11/30/2007

CERT. NO	LAST NAME	FIRST NAME	JOINED	RETIRED
313	GARDNER	JAMES/JOAN	9/22/1999	
314	ANDERSON	PAUL/KATHY	8/16/2000	
315	HERRIOT	ANDRA/KITTY/MATT	9/20/2000	
316	GARTNER	DENNIS/DEANNA	9/20/2000	4/18/2001
317	BARNARD	AARON/ANNE	11/15/2000	
318	VANVELDHUIZEN	RON/ROXANNE	2/3/2001	
319	WAFFENSMITH	JEFF/KATIE	4/18/2001	3/16/2005
320	DEVINE	TIMOTHY	4/18/2001	7/17/2004
321	NEUBAUER	CAROL/MIKE	4/18/2001	
322	SPECKIEN	JERRY	9/19/2001	
323	CARLE	STEVE/JUDY	9/19/2001	
324	GAGNON	PETER/DEB	9/19/2001	
325	BOLES	JOE/DELLA	10/17/2001	
326	GREGERSON	JOHN/PATTY	11/21/2001	
327	DAHLIN	LEROY/MARY	11/21/2001	
328	OSTROSKY	KEITH/KRISTI	3/20/2002	
329	AMOTH	DENNIS	4/17/2002	
330	MYERS	PHILIP/TERRIE	6/28/2002	
331	MIEL	DAVID/JUDITH	2/19/2003	
332	COSTELLO	TIMOTHY	2/19/2003	3/21/2007
333	FINSTROM	DOUGLAS G.	4/16/2003	
334	CSERNANSKY	JOHN/CYNTHIA	8/20/2003	
335	PENN/HEBSON	TOM/SALLY	8/20/2003	
336	IRVINE	CHUCK/ANNE	10/15/2003	
337	BROBERG/FRANCO	CARL/MADONNA	10/15/2003	
338	PASS	MARK/SUE	4/21/2004	
339	DUNN	JERRY	7/17/2004	
340	KRAMER/SAXL	ROBERT/SUSAN	7/17/2004	
341	SPAULDING	DOUG/PATRICIA	10/20/2004	
342	CARIVEAU	MIKE/WENDY	12/15/2004	
343	ELDREDGE	TIMOTHY/STEPHANIE	3/15/2006	
344	MATUSESKI	MARK/BONNIE	12/15/2004	
345	CHRISTENSEN	MARIE	1/11/2005	
346	MICHAEL	EDWARD A./DAWN	3/16/2005	
347	BEAN	LARRY/ SUE	3/16/2005	
348	NELSON	JON/ TINA	10/19/2005	
349	LORENCE	BOB/ MARLENE	8/16/2006	
3	GOKEY	WILLIAM LANGER	7/1/2006	
350	SLATER/MCCUE	JOHN / CHRIS	2/10/2007	
351	FRICKE	WALT/ JULIE	3/21/2007	
352	MACK	WARREN/LINDA	5/16/2007	
353	LINDNER/REHWALD	TOM/KATHRYN	8/15/2007	
354	WOLLAN	ROBERT/CAROLYN	9/19/2007	